



Science & Education Report

MS FRAM

MS FRAM 17th January – 7th February 2026

In-depth South Georgia,
Falklands & Antarctica
Expedition



Credit: Vivi Bolin/HX



NASA Globe Cloud Observer

We collected 3 observations for NASA using the GLOBE Observer app. Don't hesitate to continue looking at the sky back home, since every contribution helps scientists.

[View our data](#) on the global map

Science Boat

During our voyage, we conducted 10 science boat operations, during which we collected Secchi disk measurements, CTD data, and water samples.

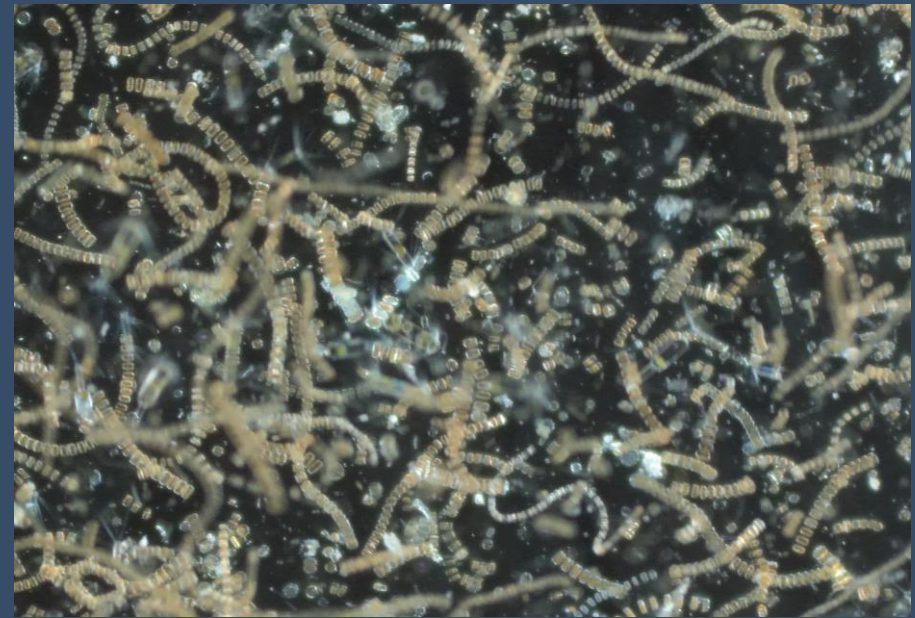
Our CTD data were submitted to the [South Atlantic Environmental Research Institute SAERI](#) (SAERI), while our Secchi disk data were uploaded to the [Secchi Disk Project](#). Finally, the samples collected for [FjordPhyto](#) will be used to improve our understanding of the impacts of climate change on phytoplankton communities.

Thank you for your enthusiasm in joining the science boats and plankton sessions. It was great fun to examine our samples with you.





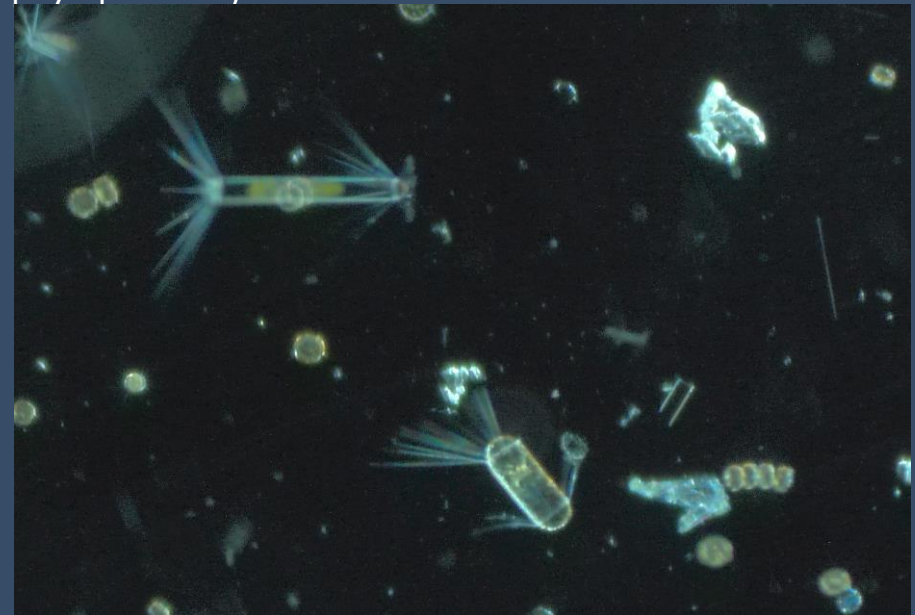
Jellyfish zooplankton.



Diatoms from the genus *Thalassiosira* (silica based phytoplankton).



Copepods and an arrow word (zooplankton).



Corethron diatoms (silica based phytoplankton).



FjordPhyto

During our voyage, we collected three samples for the FjordPhyto project, along with Secchi Disk and CTD data. These measurements will help scientists gain a better understanding of the variation and dynamics of the phytoplankton community around the Antarctic Peninsula and sustain this long-term project involving more citizen scientists like you. Thank very much for your enthusiasm and interest in the plankton communities!

To learn more about FjordPhyto, [please click here.](#)



iNaturalist

Thanks to your efforts, we recorded over 200 observations representing more than 100 different species on iNaturalist! The most frequently reported species were the humpback whale, black-browed albatross and southern giant petrel while, one-third of all species observed were plants. These opportunistic data contribute to identifying biodiversity hotspots and monitoring the arrival of invasive species in remote regions.

You can view the project and also upload your observations from our voyage [here](#).



Underwater drone

During our voyage, we had the chance to explore beneath the surface at George's Point during one of our landings. The underwater landscape showed clear signs of heavy ice influence, with scattered boulders and corridors shaped by ice scouring. In these areas, small red seaweeds from the *Palmaria* genus thrived alongside groups of tiny amphipods. This scene reflects what the Penguin's underwater environment typically looks like. [Click here to visit our YouTube channel to see the drone videos from your voyage.](#)



Happywhale

Thanks to your help, we submitted a total of 19 observations of cetaceans and pinnipeds to Happywhale. In total, we recorded 58 encounters with more than 600 individual whales and seals! This included 76 humpback whales, 14 fin whales, an array of dolphins, and five species of seals. We also had a very unique and rare glimpse of long-finned pilot whales.

Humpback whales were mostly sighted around South Georgia and the Antarctic Peninsula, and we even had a single humpback that resulted in an immediate match! This illustrates the power of citizen science around the world, and how opportunistic observations provide key information on the movement patterns of highly mobile marine animals.





e-Bird

Your onboard ornithologists, Andres and Enzo, completed 84 eBird checklists covering 79 different species. The greatest diversity was observed in the Falkland Islands and the Chilean fjords, while observations in South Georgia and the Antarctic Peninsula were largely limited to seabird species.

The most abundant species was the king penguin, with more than 32,000 individuals, followed by the Western Rockhopper Penguin with over 3,500 individuals in total. The most frequently observed species were the Southern Giant Petrel and the Black-browed Albatross. A complete overview of our voyage is available in [our trip report](#).

Guest scientist

We also had the privilege of hosting Meagan Dewar and Peter Puskic scientists from the PPME Lab.

Meagan and Peter have been on board carrying out some exciting seabird and pinniped research, a project that is examining the changes in microbial communities and pathogen distribution including avian influenza in seabirds and pinnipeds in the Southern Ocean with a particular focus around South Georgia and the Antarctic Peninsula.

Meagan and Peter have been catching penguins and flying seabirds to collect oral and cloacal swabs to examine the oral and cloacal microbiome and test for HPAI avian influenza. In addition, they have been collecting nasal swabs from seals using a long pole with a swab attached to look at the respiratory microbiome and test for HPAI.

Meagan also had a portable lab on board which she used to test for HPAI in real time.

Sign up to the newsletter using the QR code to stay up to date with their research.



Wildlife List - Birds



Wildlife List – Seabirds

SCIENTIFIC NAME	ENGLISH	DEUTSCH
<i>Aptenodytes patagonicus</i>	King Penguin	Königspinguin
<i>Pygoscelis papua</i>	Gentoo Penguin	Eselspinguin
<i>Eudyptes chrysocome</i>	Southern Rockhopper Penguin	Südfelsenpinguin
<i>Eudyptes chrysolophus</i>	Macaroni Penguin	Goldschopfpinguin
<i>Spheniscus magellanicus</i>	Magellanic Penguin	Magellanpinguin
<i>Pygoscelis adeliae</i>	Adelie Penguin	Adeliepinguin
<i>Pygoscelis antarcticus</i>	Chinstrap Penguin	Kehlstreifpinguin
<i>Oceanites oceanicus</i>	Wilson's Storm Petrel	Buntfuß-Sturmschwalbe
<i>Fregetta tropica</i>	Black-bellied Storm Petrel	Schwarzbauch-Sturmschwalbe
<i>Diomedea exulans</i>	Wandering (snowy) Albatross	Wanderalbatros
<i>Phoebastria palpebrata</i>	Light-mantled Albatross	Graumantelalbatros
<i>Thalassarche melanophris</i>	Black-browed Albatross	Schwarzbrauenalbatros
<i>Diomedea epomophora</i>	Southern Royal Albatross	Südkönigsalbatros
<i>Thalassarche chrysostoma</i>	Grey-headed Albatross	Graukopfalbatros
<i>Macronectes giganteus</i>	Southern Giant Petrel	Riesensturmvogel

Wildlife List – Seabirds

SCIENTIFIC NAME	ENGLISH	DEUTSCH
<i>Macronectes halli</i>	Northern Giant Petrel	Hallsturmvogel
<i>Fulmarus glacialisoides</i>	Southern Fulmar	Silbersturmvogel
<i>Pagodroma nivea</i>	Snow Petrel	Schneesturmvogel
<i>Pterodroma mollis</i>	Soft-plumaged Petrel	Weichfeder-Sturmvogel
<i>Daption capense</i>	Cape Petrel	Kapsturmvogel
<i>Halobaena caerulea</i>	Blue Petrel	Blausturmvogel
<i>Procellaria aequinoctialis</i>	White-chinned Petrel	Weißkinn-Sturmvogel
<i>Ardenna gravis</i>	Great Shearwater	Großer Sturmtaucher
<i>Ardenna grisea</i>	Sooty Shearwater	Dunkler Sturmtaucher
<i>Pachyptila desolata</i>	Antarctic Prion	Taubensturmvogel
<i>Pachyptila belcheri</i>	Slender-billed Prion	Dünnschnabel-Sturmvogel
<i>Pelecanoides urinatrix</i>	Common Diving Petrel	Subantarktis-Lummensturmvogel
<i>Chionis albus</i>	Snowy Sheathbill	Weißgesicht-Scheidenschnabel
<i>Pelecanoides magellani</i>	Magellanic Diving-Petrel	Magellan-Lummensturmvogel

Wildlife List — Water birds

SCIENTIFIC NAME	ENGLISH	DEUTSCH
<i>Tachyeres brachypterus</i>	Falkland Steamer Duck	Falkland-Dampfschiffente
<i>Chloephaga picta</i>	Upland Goose	Magellangans
<i>Chloephaga hybrida</i>	Kelp Goose	Kelpgans
<i>Chloephaga rubidiceps</i>	Ruddy-headed Goose	Rotkopfgans
<i>Lophonetta specularioides</i>	Crested Duck	Schopfente
<i>Spatula versicolor</i>	Silver Teal	Silberente
<i>Mareca sibilatrix</i>	Chiloe Wigeon	Chilepfeifente
<i>Anas georgica</i>	Yellow-billed Pintail	Spitzschwanzente
<i>Anas flavirostris</i>	Yellow-billed Teal	Südandenente
<i>Nycticorax nycticorax</i>	Black-crowned Night Heron	Nachtreiher
<i>Phalacrocorax magellanicus</i>	Rock Shag	Felsenscharbe
<i>Leucocarbo atriceps</i>	Imperial Shag	Kaiserscharbe
<i>Leucocarbo georgianus</i>	South Georgia Shag	Südgeorgienscharbe
<i>Leucocarbo bransfieldensis</i>	Antarctic Shag	Antarktikscharbe
<i>Haematopus leucopus</i>	Magellanic Oystercatcher	Magellanausternfischer

Wildlife List — Water birds

SCIENTIFIC NAME	ENGLISH	DEUTSCH
<i>Haematopus ater</i>	Blackish Oystercatcher	Südamerikanischer Austernfischer
<i>Charadrius falklandicus</i>	Two-banded Plover	Falkland-Regenpfeifer
<i>Zonibyx modestus</i>	Rufous-chested Dotterel	Rotbrust-Regenpfeifer
<i>Calidris fuscicollis</i>	White-rumped Sandpiper	Weißbürzel-Strandläufer
<i>Chroicocephalus maculipennis</i>	Brown-hooded Gull	Patagonienmöwe
<i>Leucophaeus scoresbii</i>	Dolphin Gull	Blutschnabelmöwe
<i>Larus dominicanus</i>	Kelp Gull	Dominikanermöwe
<i>Sterna vittata</i>	Antarctic Tern	Antarktikseeschwalbe
<i>Sterna hirundinacea</i>	South American Tern	Falklandseeschwalbe
<i>Stercorarius maccormicki</i>	South Polar Skua	Antarktiskua
<i>Stercorarius antarcticus</i>	Brown Skua	Subantarktiskua
<i>Stercorarius chilensis</i>	Chilean Skua	Chileskua
<i>Cinclodes oustaleti</i>	Grey-flanked Cinclodes	Graufanken-Uferwipper
<i>Vanellus chilensis</i>	Southern Lapwing	Bronzekiebitz
<i>Theristicus melanopis</i>	Black-faced Ibis	Schwarzzügelibis
<i>Megaceryle torquata</i>	Ringed Kingfisher	Rotbrustfischer

Wildlife List — Land birds

SCIENTIFIC NAME	ENGLISH	DEUTSCH
<i>Cathartes aura</i>	Turkey Vulture	Truthahngeier
<i>Phalcoboenus australis</i>	Striated Caracara	Falklandkarakara
<i>Caracara plancus</i>	Southern Crested Caracara	Schopfkarakara
<i>Cinclodes antarcticus</i>	Blackish Cinclodes	Falkland-Uferwipper
<i>Muscisaxicola maclovianus</i>	Dark-faced Ground Tyrant	Maskengrundtyrann
<i>Cistothorus platensis</i>	Grass Wren	Graszaunkönig
<i>Troglodytes cobbi</i>	Cobb's Wren	Falklandzaunkönig
<i>Turdus falcklandii</i>	Austral Thrush	Magellandrossel
<i>Anthus correndera</i>	Correndera Pipit	Correnderapieper
<i>Spinus barbatus</i>	Black-chinned Siskin	Bartzeisig
<i>Leistes loyca</i>	Long-tailed Meadowlark	Langschwanzstärling
<i>Melanodera melanodera</i>	White-bridled Finch	Weißbart-Ammertangare
<i>Anthus antarcticus</i>	South Georgia Pipit	Riesenpieper
<i>Zonotrichia capensis</i>	Rufous-collared Sparrow	Morgenammer
<i>Campephilus magellanicus</i>	Magellanic Woodpecker	Magellanspecht

Wildlife List — Land birds

SCIENTIFIC NAME	ENGLISH	DEUTSCH
<i>Phrygilus patagonicus</i>	Patagonian Sierra-Finch	Graukopf-Ammertangare
<i>Aphrastura spinicauda</i>	Thorn-tailed Rayadito	Stachelschwanzschlüpfer
<i>Elaenia albiceps</i>	White-crested Elaenia	Weißkronen-Olivtyrann
<i>Daptrius chimango</i>	Chimango Caracara	Chimangokarakara
<i>Theristicus melanopis</i>	Black-faced Ibis	Schwarzzügelibis
<i>Lessonia rufa</i>	Austral Negrilo	Patagoniensporntyrann
<i>Gallinago magellanica</i>	Magellanic Snipe	Magellanbekassine
<i>Caracara plancus</i>	Southern Crested Caracara	Schopfkarakara

Wildlife List - Marine Mammals



Wildlife List – marine mammals



SCIENTIFIC NAME	ENGLISH	DEUTSCH	FRANÇAIS	NORSK
<i>Balaenoptera acutorostrata</i>	Antarctic minke whale	Zwergwal	Rorqual à museau pointu	Vågehval
<i>Balaenoptera borealis</i>	Sei whale	Seiwal	Rorqual de Rudolphi	Seihval
<i>Balaenoptera physalus</i>	Fin whale	Finnwal	Rorqual commun	Finhval
<i>Megaptera novaeangliae</i>	Humpback whale	Buckelwal	Baleine à bosse	Knølhval
<i>Globicephala melas</i>	Long-finned pilot whale	Grindwal	Globicéphale noir	Grindhval / Langsveivet grindhval
<i>Lagenorhynchus australis</i>	Peale's Dolphin	Peale-Delfin	Dauphin de Peale	svart-og-hvit delfin
<i>Cephalorhynchus eutropia</i>	Commerson's Dolphin	Commerson-Delfin	Dauphin de Commerson	sørlig kystdelfin
<i>Arctocephalus gazella</i>	Antarctic fur seal	Antarktischer Seebär	Otarie à fourrure antarctique	Antarktisk pelssel
<i>Hydruga leptonyx</i>	Leopard seal	Leopardrobbe	Léopard de mer	Leopardsel
<i>Lobbodon carcinophaga</i>	Crabeater seal	Krabbenfresser	Phoque crabier	Krabbesel
<i>Leptonychotes weddellii</i>	Weddell seal	Weddellrobbe	Phoque de Weddell	Weddellsel
<i>Miroungo leonina</i>	Southern elephant seal	Südlicher See-Elefant	Éléphant de mer du Sud	Sørlig sjøelefant
<i>Lagenorhynchus obscurus</i>	Dusky dolphin	Dunkler Delfin	Dauphin sombre	Mørk delfin



IX

Connect with your
inner scientist