

The background of the slide features a deep blue underwater scene with two whales. A large, semi-transparent watermark of the Roman numeral 'IX' is positioned on the left side, spanning most of the vertical height. The text 'Science & Education Report' is centered horizontally and partially overlaps the 'IX' watermark.

Science & Education Report

MS Spitsbergen

22.09. – 06.10.2025

Iceland and Beyond:
Reykjavík to Hamburg via Scotland's
Northern Isles





Science & Education Program

Our Science and Education Team accompanied you during your expedition to the remote nature of Iceland, Faroe Islands and Scotland.

We had the opportunity to explore our destination's natural beauty, exceptional wildlife, and rich history. We organized lectures and interactive activities onboard and explored our destinations during landings, nature walks, and from the water.

History & Culture

We explored the intertwined heritage of Iceland, the Faroe Islands, Shetland, and Hamburg—regions shaped by Viking seafarers, maritime trade, and centuries of resilience. Along the way, we immersed ourselves in local cultures, walked through harbor towns steeped in history, and connected with communities whose traditions remain deeply tied to the sea. Each destination offered a powerful sense of place—where landscapes, stories, and people brought the North's rich identity to life.





Arts & Crafts

During our journey through the former Viking lands, we found creative moments to paint, color, and draw the stunning nature around us. Surrounded by dramatic coastlines and northern wildlife, we captured the spirit of the landscapes and fauna through art — turning shared inspiration into lasting memories.

Aurorasaurus

During our voyage we were lucky enough to observe the Northern Lights several nights when sailing in Icelandic waters.

We contributed our observations to the citizen science initiative Aurorasaurus, that helps NASA improve the accuracy of northern lights predictions.

Visit [their website](#) to learn more about the project





NASA Globe Cloud Observer

Together with our Environmental Scientist Nadja you observed the clouds and submitted your observations to NASA GLOBE Observer on 2 occasions.

These cloud observations can help NASA improve our understanding of Earth's atmosphere and climate by providing valuable data for scientific research and climate modelling.

[View our data](#) on the global map

iNaturalist

Throughout our expedition, we documented the flora and fauna of Svalbard and uploaded all our findings to the iNaturalist platform.

During our voyage, we submitted 168 observations of 96 different species. This effort contributes to the creation of a comprehensive understanding of the current distribution of species in the archipelago and can aid researchers in their ongoing studies and conservation efforts to protect these species.

View our data submitted on our [iNaturalist project](#)



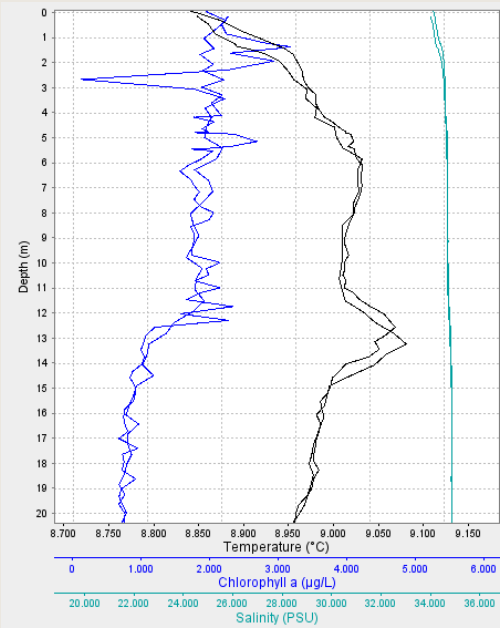
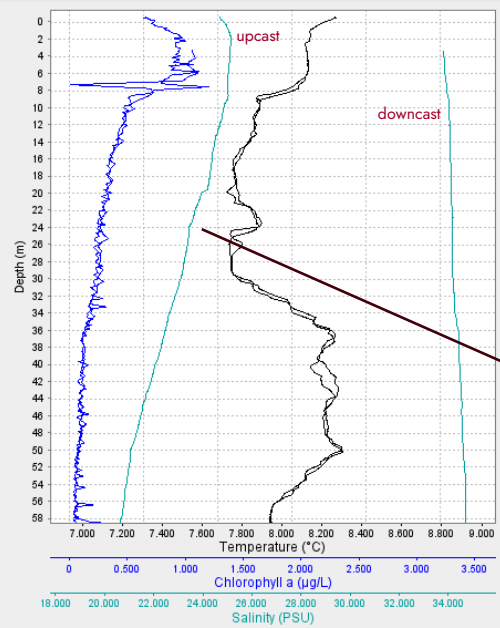


Science Boat

21 eager participants joined our 4 Science Boats in Ísafjörður & Djúpavík to study plankton and the hydrography of our destination.

They helped monitor ocean clarity through participation in the Secchi Disk citizen science study, contributing to important research on the distribution of phytoplankton blooms.

[View our data](#) submitted to the Secchi Disk Project

	Ísafjörður		Djúpavík	
Science Boat	Group A	Group B	Group C	Group D
Secchi Depth (m)	7.3	6.2	12.3	N/A
Plankton Net Mesh Size	100µm Zooplankton	20µm Phytoplankton	100µm Zooplankton	20µm Phytoplankton
Plankton Community	Athecate Hydroid Jellyfish, Copepods, Cladocerans (<i>Evadne nordmanni</i>), Sea urchin larvae, Bryozoan larvae, Radiolaria	Diatoms, Dinoflagellates	Copepods: <i>Calanus sp.</i> , <i>Acartia sp.</i> , <i>Temora longicornis</i>	Diatoms, Dinoflagellates, Copepods
CTD Profile			 <div data-bbox="2204 968 2502 1120"> <p>The difference in salinity between down- and upcast is a result of the conductivity sensor being contaminated by silt during the upcast!</p> </div>	

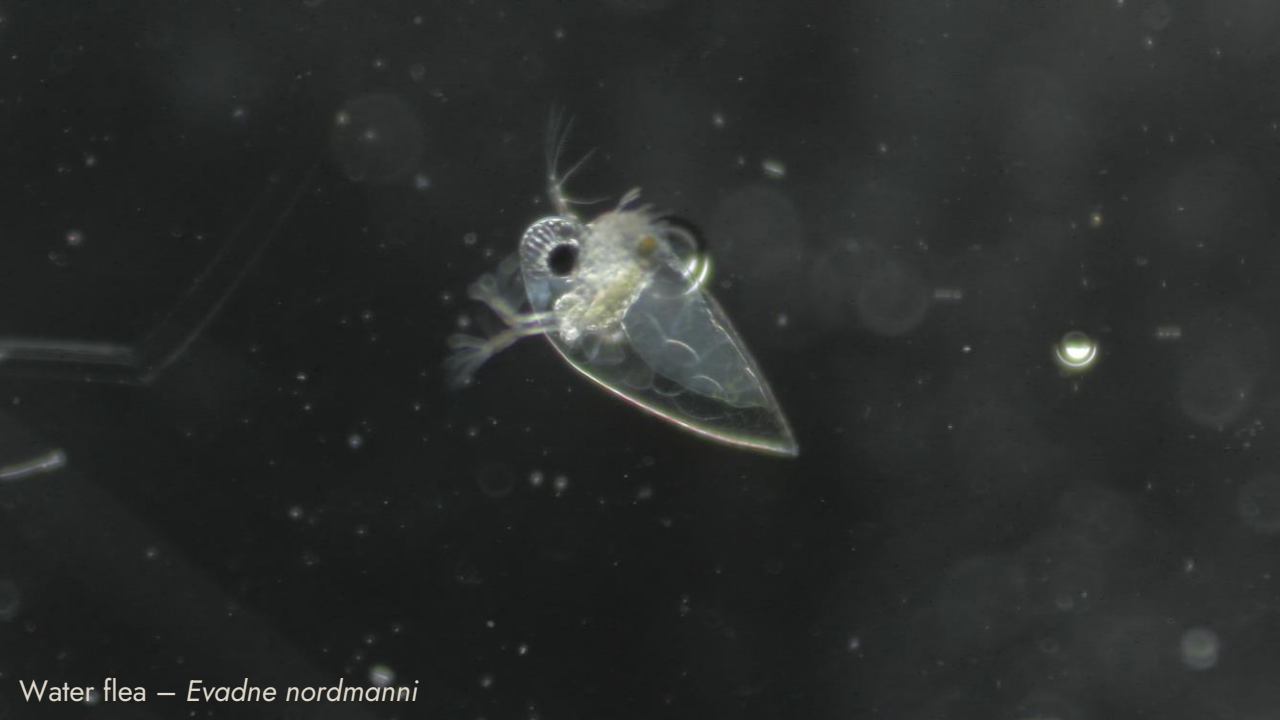


Plankton Samples

We explored the microscopic world of plankton, the tiny organisms that drift in our ocean.

In the plankton samples collected from Ísafjörður & Djúpavík, we found several species from the phytoplankton groups diatoms and dinoflagellates.

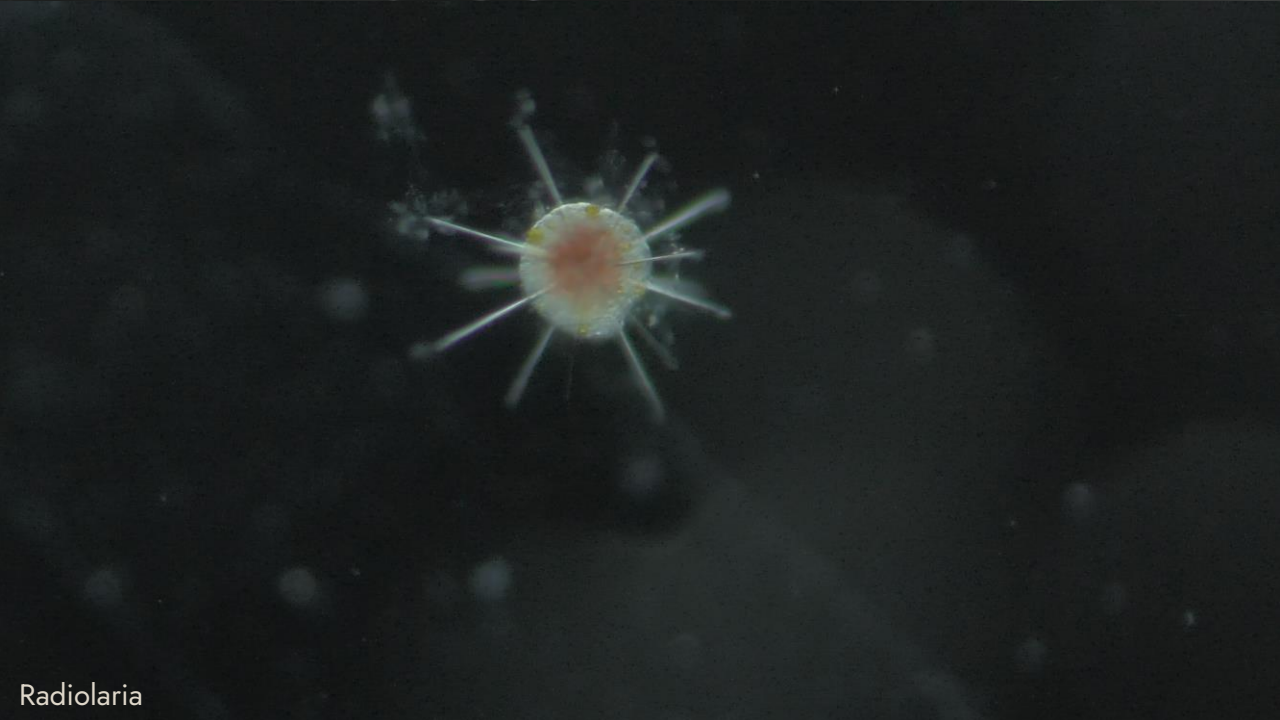
During our discovery session, we also observed various types of zooplankton, such as the arctic copepod captured in the picture.



Water flea — *Evadne nordmanni*



Copepod - *Calanus* sp.



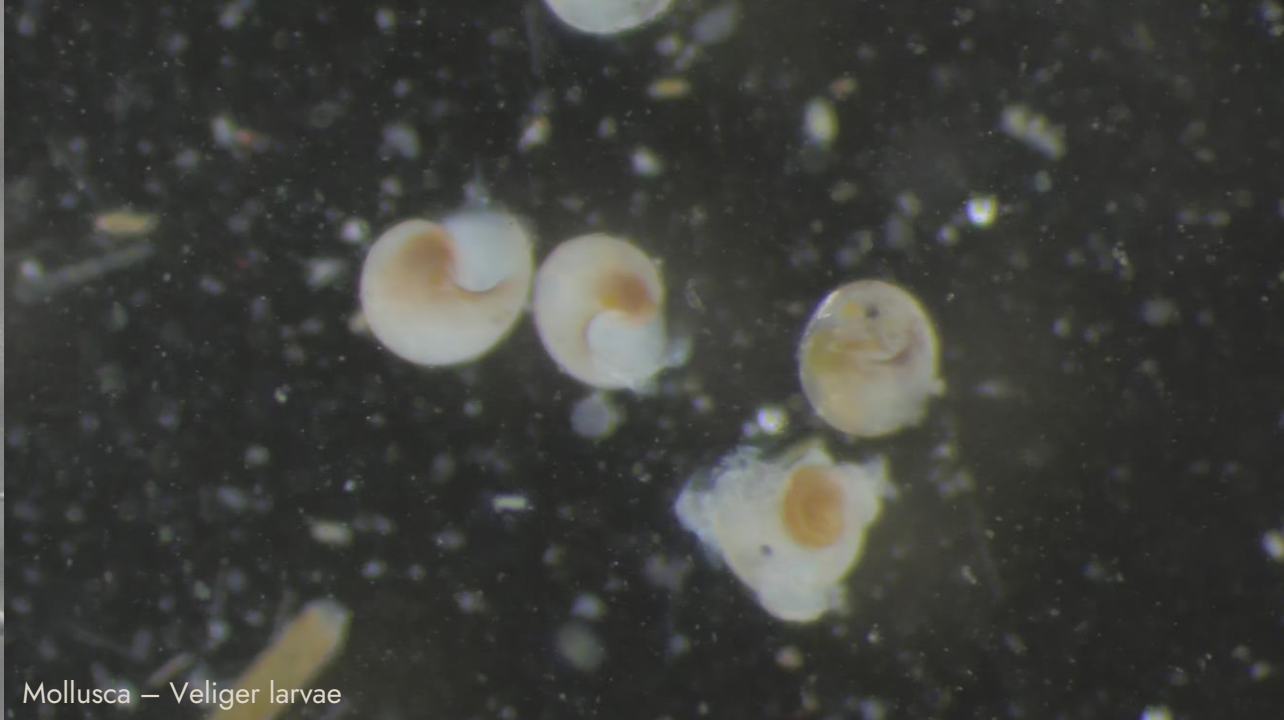
Radiolaria



Hydroid Jellyfish



Dinoflagellate — *Tripes* sp.



Mollusca — Veliger larvae



Crustacea — Nauplius Larvae



Tintinnid

Wildlife List - Birds





Common Eider



Great Cormorant



Black Guillemot



Northern Gannet

Wildlife List – Seabirds

SCIENTIFIC NAME	ENGLISH	DEUTSCH	FRANÇAIS
<i>Fulmarus glacialis</i>	Northern Fulmar	Eissturmvogel	Fulmar boréal
<i>Puffinus puffinus</i>	Manx Shearwater	Atlantiksturmtaucher	Puffin des Anglais
<i>Ardenna grisea</i>	Sooty Shearwater	Dunkler Sturmtaucher	Puffin fuligineux
<i>Morus bassanus</i>	Northern Gannet	Basstölpel	Fou de Bassan
<i>Chroicocephalus ridibundus</i>	Black-headed Gull	Lachmöwe	Mouette rieuse
<i>Larus canus</i>	Common Gull	Sturmmöwe	Goéland cendré
<i>Larus argentatus</i>	Herring Gull	Silbermöwe	Goéland argenté
<i>Larus hyperboreus</i>	Glaucous Gull	Eismöwe	Goéland Bourgmestre
<i>Larus glaucoides</i>	Iceland Gull	Polarmöwe	Goéland arctique
<i>Larus marinus</i>	Great Black-backed Gull	Mantelmöwe	Goéland marin
<i>Larus fuscus</i>	Lesser Black-backed Gull	Heringsmöwe	Goéland brun
<i>Sterna paradisaea</i>	Arctic Tern	Küstenseeschwalbe	Sterne Arctique
<i>Thalasseus sandvicensis</i>	Sandwich Tern	Brandseeschwalbe	Sterne caugek
<i>Rissa tridactyla</i>	Black-legged Kittiwake	Dreizehenmöwe	Mouette tridactyle

Wildlife List – Seabirds

SCIENTIFIC NAME	ENGLISH	DEUTSCH	FRANÇAIS
<i>Fratercula arctica</i>	Atlantic Puffin	Papageitaucher	Macareux moine
<i>Alle alle</i>	Little Auk	Krabbentaucher	Mergule nain
<i>Cepphus grylle</i>	Black Guillemot	Gryllteiste	Guillemot à miroir
<i>Uria aalge</i>	Common Guillemot (Common Murre)	Trottellumme	Guillemot marmette
<i>Phalacrocorax aristotelis</i>	European Shag	Krähenscharbe	Cormoran huppé
<i>Phalacrocorax carbo</i>	Great Cormorant	Kormoran	Grand Cormoran

Wildlife List — Waterbirds

SCIENTIFIC NAME	ENGLISH	DEUTSCH	FRANÇAIS
<i>Cygnus cygnus</i>	Whooper Swan	Singschwan	Cygne chanteur
<i>Anser anser</i>	Greylag Goose	Graugans	Oie cendrée
<i>Branta bernicla</i>	Brent Goose	Ringelgans	Bernache cravant
<i>Gavia immer</i>	Great Northern Diver (Common Loon)	Eistaucher	Plongeon huard
<i>Mareca penelope</i>	Eurasian Wigeon	Pfeifente	Canard siffleur
<i>Anas platyrhynchos</i>	Mallard	Stockente	Canard colvert
<i>Anthya fuligula</i>	Tufted Duck	Reiherente	Fuligule morillon
<i>Somateria mollissima</i>	Common Eider	Eiderente	Eider à duvet
<i>Clangula hyemalis</i>	Long-tailed Duck	Eisente	Harelde kakawi
<i>Bucephala islandica</i>	Barrow's Goldeneye	Spatelente	Garrot d'Islande
<i>Melanitta nigra</i>	Common Scoter	Trauerente	Macreuse noire
<i>Mergus serrator</i>	Red-breasted Merganser	Mittelsäger	Harle huppé
<i>Haematopus ostralegus</i>	Eurasian Oystercatcher	Austernfischer	Huïtrier pie
<i>Arenaria interpres</i>	Ruddy Turnstone	Steinwälzer	Tournepierre à collier
<i>Ardea cinerea</i>	Grey Heron	Graureiher	Héron cendré

Wildlife List — Land birds

SCIENTIFIC NAME	ENGLISH	DEUTSCH	FRANÇAIS
<i>Parus major</i>	Great Tit	Kohlmeise	Mésange charbonnière
<i>Erithacus rubecula</i>	European Robin	Rotkehlchen	Rougegorge familier
<i>Passer domesticus</i>	House Sparrow	Hausperling	Moineau domestique
<i>Acanthis flammea</i>	Redpoll	Birkenzeisig	Sizerin Flammé
<i>Plectrophenax nivalis</i>	Snow Bunting	Schneeammer	Plectrophane des neiges
<i>Sturnus vulgaris</i>	European Starling	Gemeiner Star	Étourneau sansonnet
<i>Columba livia domestica</i>	Feral Pigeon	Stadttaube	Pigeon domestique
<i>Turdus iliacus</i>	Redwing	Rotdrossel	Grive mauvis
<i>Turdus merula</i>	Eurasian (Common) Blackbird	Amsel	Merle noir
<i>Corvus corax</i>	Northern (Common) Raven	Kolkrabe	Grand Corbeau
<i>Corvus cornix</i>	Hooded Crow	Nebelkrähe	Corneille mantelée
<i>Corvus corone</i>	Carrion Crow	Rabenkrähe	Corneille noire
<i>Motacilla alba</i>	White Wagtail	Bachstelze	Bergeronnette grise
<i>Lagopus muta</i>	Rock Ptarmigan	Alpenschneehuhn	Lagopède alpin
<i>Gallinago gallinago</i>	Common Snipe	Bekassine	Bécassine des marais



eBird

During our Wildlife Watches and town visits, our ornithologist Julia and expedition leader Marcus conducted detailed bird surveys, recording observations for the citizen science platform eBird. We recorded **42** different species of birds in **21** checklists.

This initiative helps contribute valuable data to global bird conservation efforts, enhancing our understanding of seabird populations and their habitats.

View our data on our [eBird trip report](#)

Wildlife List - Mammals





Humpback Whale



Harbour Seal



Long-finned Pilot Whale



Minke Whale

Wildlife List – Mammals

Marine Mammals

SCIENTIFIC NAME	ENGLISH	DEUTSCH	FRANÇAIS
<i>Balaenoptera acutorostrata</i>	Common minke whale	Zwergwal	Rorqual à museau pointu
<i>Balaenoptera physalus</i>	Fin whale	Finnwal	Rorqual commun
<i>Megaptera novaeangliae</i>	Humpback whale	Buckelwal	Baleine à bosse
<i>Hyperoodon ampullatus</i>	Northern bottlenose whale	Nördlicher Entenwal	Hyperoodon boréal
<i>Globicephala melas</i>	Long-finned pilot whale	Grindwal	Globicéphale noir
<i>Tursiops truncatus</i>	Common Bottlenose Dolphin	Großer Tümmler	Graund Dauphin
<i>Lagenorhynchus albirostris</i>	White-beaked dolphin	Weißschnauzendelfin	Lagénorhynque à bec blanc
<i>Halichoerus gryphus</i>	Grey Seal	Kegelrobbe	Phoque Gris
<i>Phoca vitulina</i>	Harbour seal	Seehund	Phoque Veau-Marin

Land Mammals

SCIENTIFIC NAME	ENGLISH	DEUTSCH	FRANÇAIS
<i>Sciurus carolinensis</i>	Eastern Grey Squirrel	Grauhörnchen	Écureuil gris

Happywhale

We submitted pictures of the identifying features of the marine mammals that we encountered to the citizen science platform, Happywhale. In total, 16 encounters with 4 different species of cetaceans were logged and matched to 13 individual whales.

Happywhale allows us to follow individual whales and other marine mammals and learn about their life history and migratory routes. This helps us better understand these fascinating creatures and contributes to their conservation.

[View our submissions](#) to Happywhale



THE



Connect with your inner scientist