

The background of the slide is a deep blue underwater scene featuring two whales. One whale is in the upper left, angled upwards, while the other is larger and positioned in the lower right, swimming towards the right. A large, semi-transparent watermark with the letters 'HAX' is overlaid on the left side of the image. The text 'Science Recap' is centered in a white, bold, sans-serif font.

# Science Recap

MS FRAM



# MS FRAM 27<sup>th</sup> July- 05<sup>th</sup> August 2025

Circumnavigating Svalbard



Credit: Jan Hvizdal/ HX





# Citizen Science

## **Inaturalist**

We submitted 36 observations to Inaturalist. You can view our observations by [clicking here](#).

## **Ebird**

We submitted 31 checklists to Ebird. You can view the [trip report for your voyage by clicking here](#).

## **Planktonics Project – eDNA around Svalbard.**

We collected water samples three time during this voyage.





# iNaturalist

On our voyage we submitted 36 observations identifying 21 different species from plants to animals passing to planktonic creatures.

Thank you very much for your contribution, and feel free to contribute to our project for this voyage when you are back home reviewing your photos.

[Click here to visit the iNaturalist Project for this voyage.](#)



# eBird

On our voyage we conducted 31 surveys, observed 20 bird species and counted a total of 1261 individuals. The most abundant species were the black legged kittiwake followed by the thick billed murre. These data are crucial to document the abundance and distribution of emblematic polar and cosmopolitan species around Svalbard, both terrestrial and marine species.

Thank you very much for joining Enzo & Liam during our wildlife watch and help us contributing to the greatest birding project at a worldwide scale !

[Click here to visit the Ebird Project for this voyage.](#)



# HappyWhale

During our circumnavigation around Spitsbergen, we saw a diversity of marine mammals including polar bears, minke whales, belugas, walrus, harbour seals, harp seals, and even the rare hooded seal!

If you managed to take photographs of any markings or scarring on whales or seals, you can still submit these to [happywhale.com](http://happywhale.com) once you are home.

You can do the same for any older photos you may have from years gone by, this can give us a better idea of how long individuals sighted recently have been alive for!

Thank you very much for joining Jenna during our wildlife watches.

[Click here to visit the HappyWhale Project.](http://happywhale.com)





# Science Boat

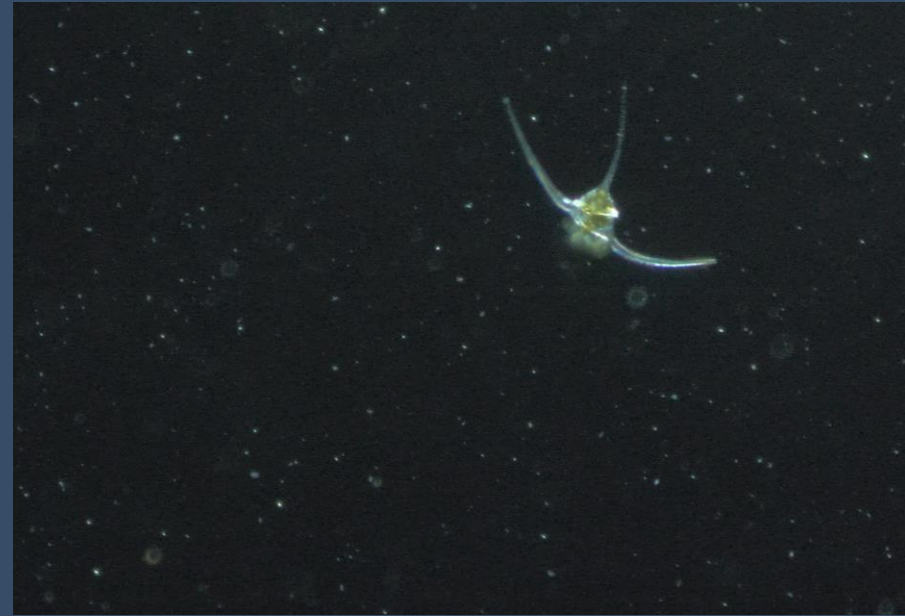
On our voyage we conducted 5 Science Boats during which we realized Secchi disc measurements & CTD profiles to characterize the water column parameters, and collected plankton & Niskin bottle samples for eDNA.

We used the microscopes in the science centre to identify plankton caught during the science boats. Phytoplankton was almost null whereas zooplankton was abundant, with a variety of copepods, invertebrates larvae and eggs found in our samples. Please see the following slide for more pictures of plankton caught during our voyage.

[Click here to visit the Secchi Disc Project and view the Secchi data.](#)



Mr. Copepod. *Calanus finmarchicus*



Dinoflagellate *Tripos* sp.



# Planktonics Project – eDNA around Svalbard

This project aims to describe the diversity of organisms present in waters around the archipelago of Svalbard using the eDNA technics. This consists of filtering water, extract and amplify the DNA preserved on the filters targeting specific groups of species. During our Science boat, we managed to collect three times (Alicehamna, Monacobreen & Burgerbukta) for this project. Filters were kept frozen in our facilities until they will be picked up by the scientists to be analysed in the laboratory. This project has been founded in part by the HX Foundation.





# Geology report

Svalbard is a paradise for geologists — a land where deep time rises to the surface. Its mountains and valleys reveal a story stretching back over 2.5 billion years. Here, you'll find rich seams of coal formed in tropical swamps, marine fossils of ichthyosaurs and ammonites from long-vanished seas, and even the preserved footprints of dinosaurs pressed into Cretaceous sandstone.

The next slides highlights the surprising rocks formation we discovered during our voyage.











# Wildlife List - Marine & Land Mammals





Cetaceans														
Scientific Name	English	Deutsch	Francais	中文	27/07	28/07	29/07	30/07	31/07	01/08	02/08	03/08	04/08	05/08
<i>Balaenoptera acutorostrata</i>	Common Minke Whale	Zwergwal	Petit rorqual	小须鲸		X	X	X		X				
<i>Balaenoptera musculus</i>	Blue Whale	Blauwal	Rorqual bleu	蓝鲸										
<i>Balaenoptera physalus</i>	Fin Whale	Finnwal	Rorqual commun	长须鲸/鲸鲸										
<i>Megaptera novaeangliae</i>	Humpback Whale	Buckelwal	Baleine à bosse	座头鲸										
<i>Delphinapterus leucas</i>	Beluga Whale	Weißwal	Béluga	白鲸		X						X		
<i>Lagenorhynchus albirostris</i>	White-beaked Dolphin	Weißschnauzendelfin	Lagénorhynque à bec blanc	白喙海豚										
<i>Physeter macrocephalus</i>	Sperm Whale	Pottwal	Grand cachalot	抹香鲸										
-	Unidentified whale	Nicht identifizierter Wal	Non identifié Baleine	未识别鲸类		X								
Pinnipeds and Polar Bear														
Scientific Name	English	Deutsch	Francais	中文	27/07	28/07	29/07	30/07	31/07	01/08	02/08	03/08	04/08	05/08
<i>Erignathus barbatus</i>	Bearded Seal	Bartrobbe	Phoque barbu	髯海豹			X	X	X					
<i>Phoca vitulina</i>	Harbour Seal, Common Seal	Seehund	Phoque veau-marin	港海豹		X								
<i>Pusa hispida</i>	Ringed Seal	Ringelrobbe	Phoque annelé	环斑海豹					X			X		
<i>Odobenus rosmarus</i>	Walrus	Walross	Morse	海象			X	X		X	X			
<i>Cystophora cristata</i>	Hooded seal	Klappmützenrobbe	Phoque à capuchon	冠海豹					x					
<i>Pagophilus groenlandicus</i>	Harp/Greenland seal	Sattelrobbe	Phoque du Groenland	竖琴海豹					X					
<i>Ursus maritimus</i>	Polar Bear	Eisbär	L'ours blanc	北极熊			X		XXX		X			
Land Mammals														
Scientific Name	English	Deutsch	Francais	中文	27/07	28/07	29/07	30/07	31/07	01/08	02/08	03/08	04/08	05/08
<i>Rangifer tarandus</i>	Reindeer	Rentier	Renne	驯鹿		X							X	
<i>Alopex lagopus</i>	Arctic Fox	Polarfuchs	Renard arctique	北极狐							X			



# Wildlife List — Birds



## Birds - Wildlife List - MS FRAM 27/07 to 05/08 2025

[illegible]



# Wildlife List — Flora



# Flora - Wildlife List - MS FRAM 27/07 to 05/08 2025

Scientific Name	English	Deutsch	Francais	中文	27/07	28/07	29/07	30/07	31/07	01/08	02/08	03/08	04/08	05/08
<i>Bistorta vivpara</i>	Alpine bistort	Knöllchen-Knöterich	Renouée vivipare	珠芽蓼		X		X					X	
<i>Cassiope tetragona</i>	Arctic white heather	Vierkantige Schuppenheide												
<i>Cerastium arcticum</i>	Arctic mouse-ear chickweed	Arktisches hornkraut	Céraiste arctique					X					X	
<i>Cochlearia officinalis</i>	Scurvy-grass	Gebräuliches löffelkraut	Cranson officinal	岩荠										
<i>Dryas octopetala</i>	Mountain avens	Silberwurz	Dryade á 8 pétale	仙女木				X			X			
<i>Eriophorum scheuchzeri</i>	Arctic cottongrass	Scheuchzer's wollgrass	Linaigrette de scheuchzer											
<i>Fucus vesiculosus</i>	Bladderwrack	Blasentang	Fucus vesiculeux											
<i>Oxyria digyna</i>	Mountain sorrel	Alpen-säuerling	Oxyria á 2 carpelles	山蓼				X					X	
<i>Papaver dahlianum</i>	Svalbard poppy	Svalbard-mohn	Pavot											
<i>Pedicularis hirsuta</i>	Hairy lousewort	Behaartes läusekraut	Pédiculaire					X						
<i>Ranunculus nivalis</i>	Snow buttercup	Schnee-hahnenfuss	Renoncule											
<i>Ranunculus pygmaeus</i>	Dwarf Buttercup	Zwerg-Hahnenfuß	Renoncule naine					X						
<i>Salix arctica</i>	Arctic Willow	Arktische Weide	Saule arctique	北极柳				X					X	
<i>Salix herbacea</i>	Dwarf willow	Kraut-Weide	Saule herbacé											
<i>Saxifraga cernua</i>	Drooping saxifrage	Nickende Steinbrech	Saxifrage penchée	零余虎耳草		X							X	
<i>Saxifraga cespitosa</i>	Tufted saxifrage	Rasen-steinbrech	Saxifrage en touffe			X								
<i>Saxifraga hirculus</i>	Marsh saxifrage	Moor-steinbrech	Saxifrage œil-de-bouc	山羊臭虎耳草										
<i>Saxifraga nivalis</i>	Alpine saxifrage	Schnee-steinbrech	Saxifrage arctique											
<i>Saxifraga oppositifolia</i>	Purple saxifrage	Roter steinbrech	Saxifrage á feuilles opposées	挪威虎耳草										
<i>Saxifraga platysepala</i>	Spider plant	Ffaden-steinbrech	Saxifrage des spitzberg											
<i>Silene acaulis</i>	Moss champion	Stengelloses leimkraut	Silène acaule			X		X						





**Thank you all  
for your  
contribution  
to science!**