



Science & Education Report

MS Spitsbergen

11.08.- 20.08.2025

Serene Greenland —

Exploring the Largest Fjord
System on Earth





Science & Education Program

Our Science and Education Team accompanied you during your expedition to the remote nature of Scoresbysund.

We had the opportunity to explore our destination's natural beauty and rich history. We organized lectures and interactive activities onboard and explored our destinations during community visits, nature landings and from the water.

Your trip's statistics!

- **Science and Education Program**

- 16 Lectures
- 9 Tiny Talks
- 18 Workshops
- 6 Art Sessions
- 3 Science Boats

- **Citizen Science contributions**

- 4 eDNA samples for EPIC/University of Bergen
- 5 GLOBE Cloud submissions
- 33 eBird checklists with 27 species observed
- 97 iNaturalist observations of 60 different species



History & Culture

During our expedition, we visited historical sites that provided an insight into Greenland's human activity.

In this picture we see Sydkap with a hut built in 1946, built for fishing enterprise but abandoned only one year latter. The hut is still used occasionally by hunters from around Scoresbysund.



History & Culture

Our visit to Itoqqortoormiit showed us the merge of Greenlandic and European history and culture in the traditions of their people, the layout of the village and the colours of the houses. We also saw the influence of nature on the living conditions.

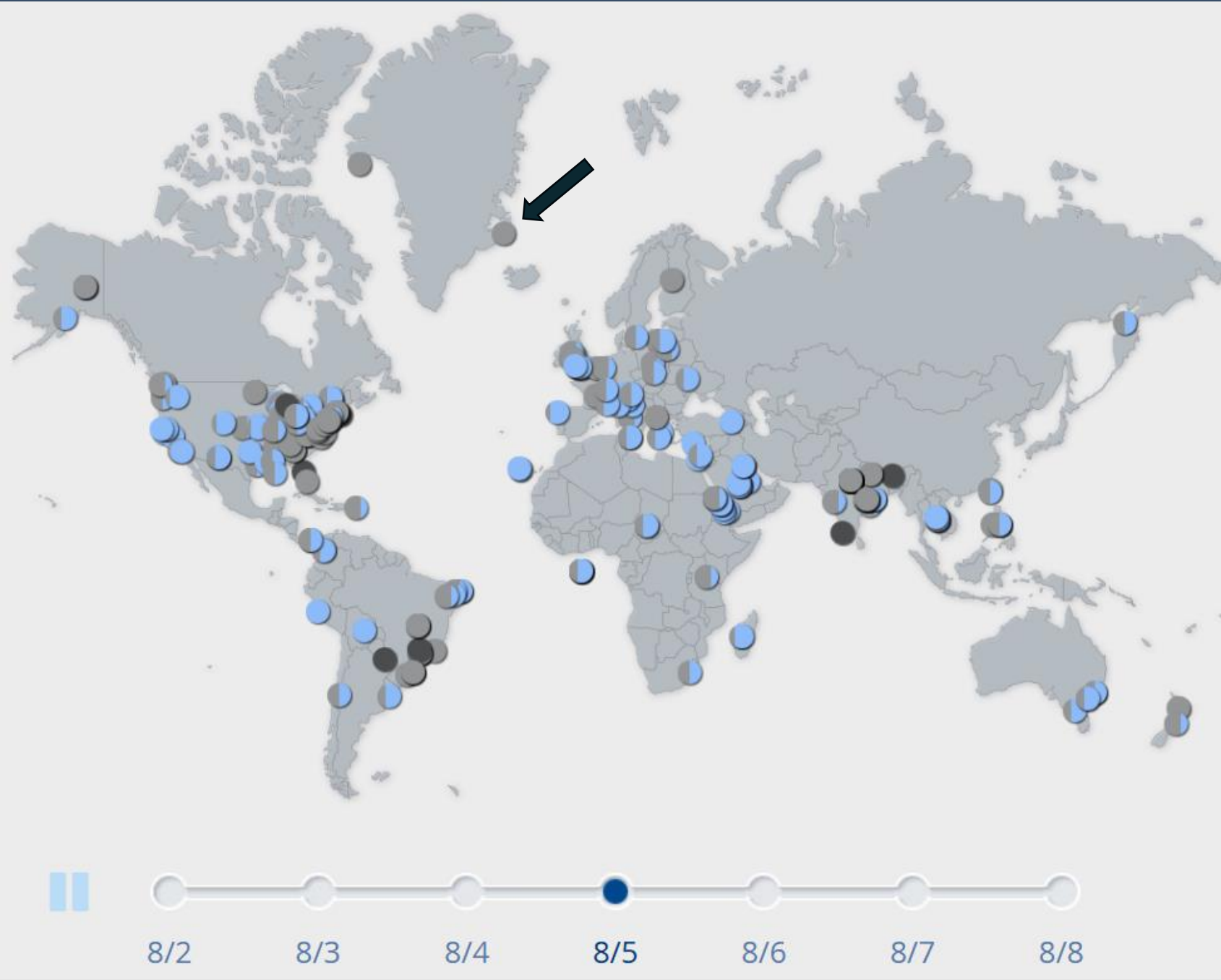


NASA Globe Cloud Observer

Together with our Environmental Scientist Lois and Liam you observed the clouds and submitted your observations to NASA GLOBE Observer on 5 occasions. We will soon receive an email comparing your observations with satellite data. In the meantime, you can already see on the map how few observations there are in Greenland — which highlights just how valuable your data collection is for scientists studying clouds and climate.

These cloud observations can help NASA improve our understanding of Earth's atmosphere and climate by providing valuable data for scientific research and climate modelling.

[View our data](#) on the global map





NASA Globe Cloud Observer

We also saw on this trip an uncommon cloud type generally speaking globally. These are lenticular clouds. Lenticular clouds have been mistaken for UFOs, because many of them have the shape of a flying saucer.

They form normally over mountainous regions and also fairly high in the troposphere so most people do not see them.

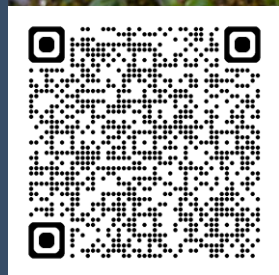
They are very beautiful but also inside the cloud is very unstable, pilots will avoid them at all costs.

iNaturalist

Throughout our expedition, we documented the flora and fauna of Svalbard and uploaded all our findings to the iNaturalist platform.

During our voyage, we submitted 97 observations of 60 different species. This effort contributes to the creation of a comprehensive understanding of the current distribution of species in the archipelago and can aid researchers in their ongoing studies and conservation efforts to protect these species.

View our data submitted on our project by scanning the QR code



iNaturalist

Throughout our expedition, we documented the flora and fauna of Svalbard and uploaded all our findings to the iNaturalist platform.

During our voyage, we submitted 97 observations of 60 different species. This effort contributes to the creation of a comprehensive understanding of the current distribution of species in the archipelago and can aid researchers in their ongoing studies and conservation efforts to protect these species.

The screenshot displays the iNaturalist website interface. At the top, there is a navigation bar with links for 'Explore', 'Your Observations', 'Community', 'Identify', and 'More'. A search bar is located on the right side of the navigation bar. Below the navigation bar, there is a section for 'Observations' with a search bar and a location bar. The main content area features a map of Svalbard with 97 observations marked by red squares. To the right of the map, there is a list of species with their names, scientific names, locations, and dates. The species listed are Roseroot (Rhodiola rosea), Alpine Pussytoe (Antennaria alpina), Rock Foam (Stereocaulon saxatile), and Arctic Willow (Salix arctica). Each species entry includes a small image of the plant and a 'Research Grade' badge.

ch

Explore Your Observations Community Identify More

Upload

Observations

Species Location

97 OBSERVATIONS 60 SPECIES 5 IDENTIFIERS 5 OBSERVATIONS

List Places of Interest Redo search in map

Greenland Iceland Reykjavik

Roseroot • Roseroot
Orpin Rose
(*Rhodiola rosea*)
Sermersooq Municipality
Aug 17, 2025
Research Grade

Alpine Pussytoe
(*Antennaria alpina*)
Sermersooq Municipality
Aug 17, 2025
1

Rock Foam
(*Stereocaulon saxatile*)
Sermersooq Municipality
Aug 17, 2025
1

Arctic Willow • Arctic Willow
Weide • Saule Arktisch
(*Salix arctica*)
Sermersooq Municipality



Science Boat

28 eager participants joined our 4 Science Boats in to study plankton and the hydrography of our destination.

Together we collected data with our guest researchers, Sanna and Aino, for the Planktonics project looking at environmental DNA as a way of understanding the plankton in the area,

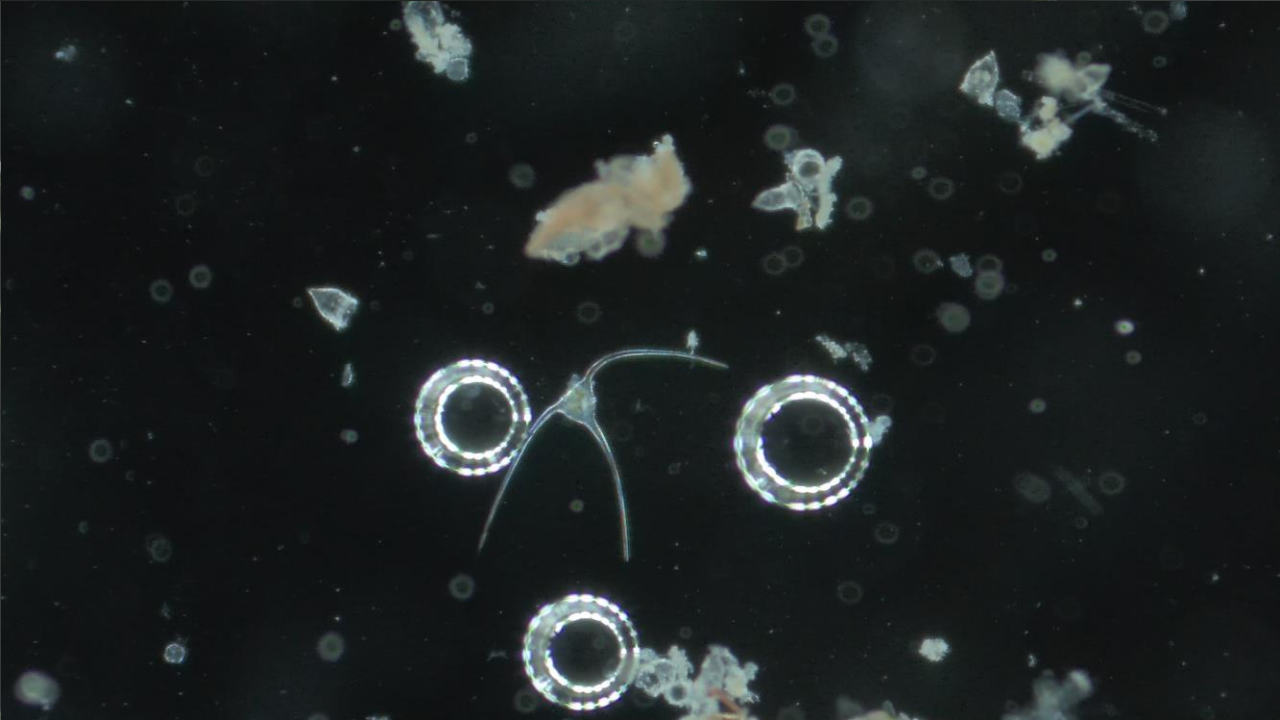
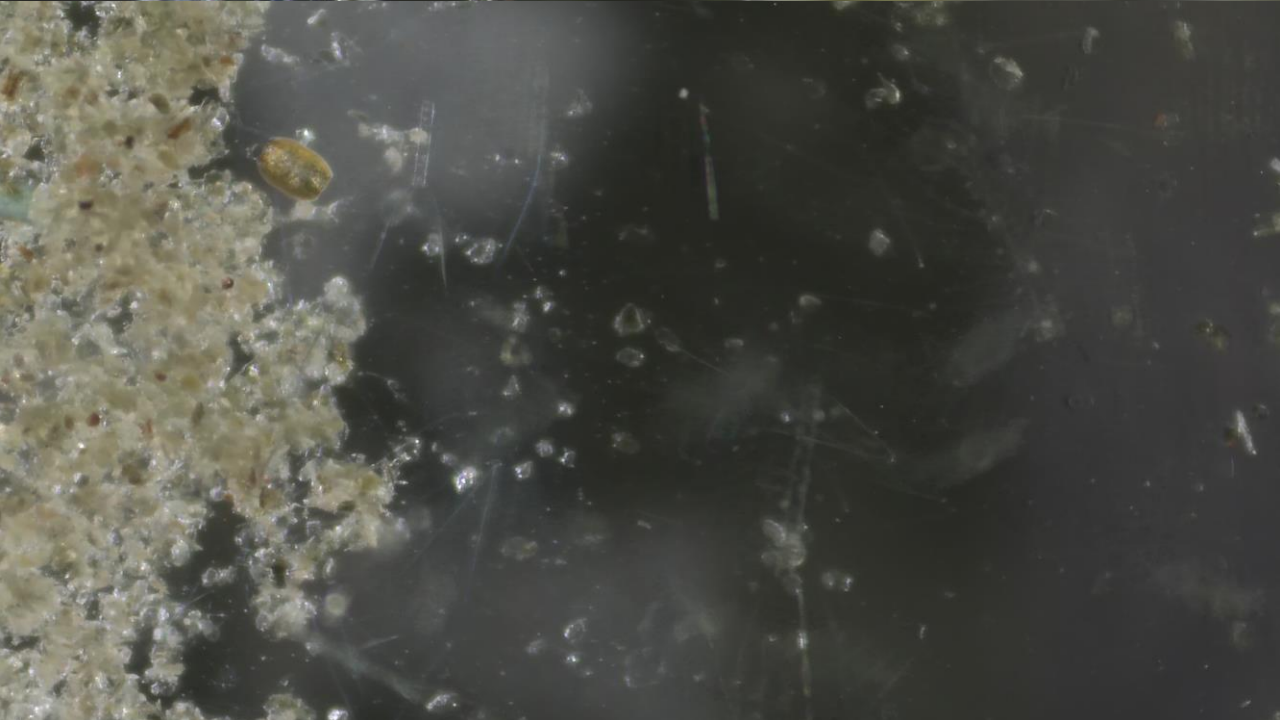


Plankton Samples

We explored the microscopic world of plankton, the tiny organisms that drift in our ocean.

In all of our plankton samples we found Copepods, the keystone organism of the marine food web in the Arctic.

During our discovery session, we also observed various types of zooplankton, such as the copepods captured in the picture.





EPIC Project

During our voyage, Marine Scientist Lauren also collected environmental DNA samples for the EPIC project (Innovative approaches to understanding marine pelagic ecosystems through eDNA biodiversity data).

The three samples collected during our trip will contribute to groundbreaking research by capturing eDNA from the waters we traversed, helping to build a comprehensive picture of marine biodiversity in the North Atlantic-Arctic interface. This effort supports the scientific community in monitoring ecosystem health and understanding the impacts of environmental changes.



eBird

During our wildlife watches and landings, our naturalists conducted detailed bird surveys, recording observations for the citizen science platform eBird. We recorded 27 different species of birds in 34 checklists.

This initiative helps contribute valuable data to global bird conservation efforts, enhancing our understanding of bird populations and their habitats.

View our data on our [e-Bird trip report](#)

Wildlife List - Birds



Wildlife List – Seabirds

SCIENTIFIC NAME	ENGLISH	DEUTSCH	FRANÇAIS
<i>Fulmarus glacialis</i>	Northern Fulmar	Eissturmvogel	Fulmar boréal
<i>Ardenna gravis</i>	Great Shearwater	Kappensturmtaucher	Puffin Majeur
<i>Ardenna grisea</i>	Sooty Shearwater	Dunkler Sturmtaucher	Puffin Fuligineux
<i>Puffinus puffinus</i>	Manx Shearwater	Schwarzschnabelsturmtaucher	Puffin des Anglais
<i>Morus bassanus</i>	Northern Gannet	Basstölpel	Fou de Bassan
<i>Stercorarius skua</i>	Great Skua	Große Raubmöwe	Grand Labbe
<i>Stercorarius parasiticus</i>	Arctic Skua (Parasitic Jaeger)	Schmarotzerraubmöwe	Labbe parasite
<i>Stercorarius longicaudus</i>	Long-tailed Skua (Long-tailed Jaeger)	Falkenraubmöwe	Labbe à longue queue
<i>Rissa tridactyla</i>	Black-legged Kittiwake	Dreizehenmöwe	Mouette tridactyle
<i>Xema sabini</i>	Sabine's Gull	Schwalbenmöwe	Mouette de Sabine
<i>Larus hyperboreus</i>	Glaucous Gull	Eismöwe	Goéland Bourgmestre
<i>Larus fuscus</i>	Lesser Black-backed Gull	Heringsmöwe	Goéland brun
<i>Larus marinus</i>	Great Black-backed Gull	Mantelmöwe	Goéland marin
<i>Sterna paradisaea</i>	Arctic Tern	Küstenseeschwalbe	Sterne Arctique
<i>Alle alle</i>	Little Auk	Krabbentaucher	Mergule nain
<i>Fratercula arctica</i>	Atlantic Puffin	Papageitaucher	Macareux moine
<i>Uria aalge</i>	Common Guillemot (Common Murre)	Trottellumme	Guillemot marmette
<i>Uria lomvia</i>	Brünnich's Guillemot (Thick-billed Murre)	Dickschnabellumme	Guillemot de Brünnich

Wildlife List — Water birds

SCIENTIFIC NAME	ENGLISH	DEUTSCH	FRANÇAIS
<i>Anser brachyrhynchus</i>	Pink-footed Goose	Kurzschnabelgans	Oie à bec court
<i>Branta leucopsis</i>	Barnacle Goose	Weißwangengans	Bernache nonnette
<i>Somateria mollissima</i>	Common Eider	Eiderente	Eider à duvet
<i>Gavia stellata</i>	Red-throated Diver (Red-throated Loon)	Sterntaucher	Plongeon catmarin
<i>Calidris alba</i>	Sanderling	Sanderling	Bécasseau sanderling
<i>Calidris maritima</i>	Purple Sandpiper	Meerstrandläufer	Bécasseau violet
<i>Calidris alpina</i>	Dunlin	Alpenstrandläufer	Bécasseau variable
<i>Arenaria interpres</i>	Ruddy Turnstone	Steinwälzer	Tournepierre à collier

Wildlife List — Land birds

SCIENTIFIC NAME	ENGLISH	DEUTSCH	FRANÇAIS
<i>Oenanthe oenanthe</i>	Northern Wheatear	Steinschmätzer	Traquet motteux
<i>Corvus corax</i>	Northern (Common) Raven	Kolkrabe	Grand corbeau
<i>Calcarius lapponicus</i>	Lapland Longspur	Spornammer	Plectrophane lapon
<i>Plectrophenax nivalis</i>	Snow Bunting	Schneeammer	Bruant des neiges
<i>Falco peregrinus</i>	Peregrine Falcon	Wanderfalke	Faucon pèlerin



Northern Fulmar
Fulmar glacialis



Peregrine Falcon
Falco peregrinus



Great Shearwater
Ardenna gravis

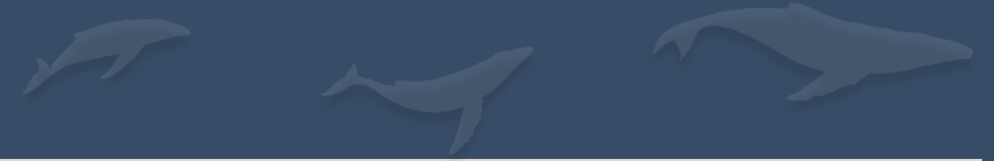


Northern Wheatear
Oenanthe oenanthe

Wildlife List - Marine Vertebrates



Wildlife List — Marine



SCIENTIFIC NAME	ENGLISH	DEUTSCH	FRANÇAIS
<i>Megaptera novaeangliae</i>	Humpback Whale	Buckelwal	Baleine à Bosse
<i>Balaenoptera acutorostrata</i>	Common Minke Whale	Zwergwal	Rorqual à museau pointu
<i>Lagenorhynchus albirostris</i>	White-beaked Dolphin	Weißschnauzendelfin	Lagénorhynque à bec blanc
<i>Pusa hispida</i>	Ringed Seal	Ringelrobbe	Phoque Annelé
<i>Cetorhinus maximus</i>	Basking Shark	Riesenhai	Requin pèlerin

White-beaked Dolphin
Lagenorhynchus albirostris



White-beaked Dolphin
Lagenorhynchus albirostris



Basking Shark
Cetorhinus maximus



Wildlife List - Land Mammals



Wildlife List – Land mammals



SCIENTIFIC NAME	ENGLISH	DEUTSCH	FRANÇAIS
<i>Dicrostonyx groenlandicus</i>	Northern Collared Lemming	Nördlicher Halsbandlemming	Lemming du Groenland
<i>Lepus arcticus</i>	Arctic Hare	Polarhase	Lièvre Arctique
<i>Ovibos moschatus</i>	Muskox	Moschusochse	Boeuf Musqué
<i>Vulpes lagopus</i>	Arctic Fox	Polarfuchs	Renard Arctique

Arctic Hare
Lepus arcticus



Arctic Fox
Vulpes lagopus



**Connect with your
inner scientist**

IX

