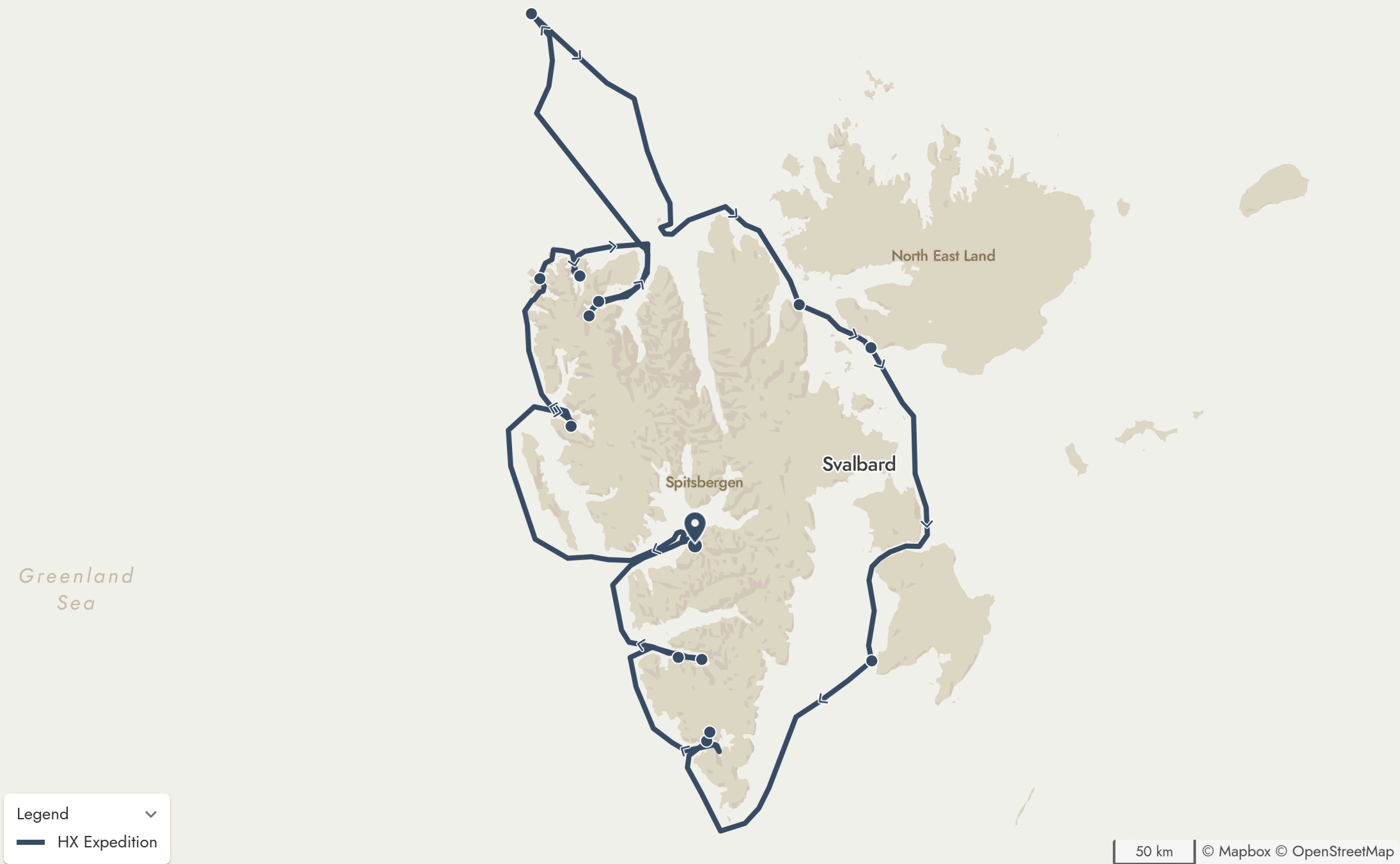


MS Spitsbergen

2025.06.29 - 2025.07.08





Longyearbyen

Longyearbyen

Adventdalen

Legend

— HX Expedition

Embarkation Day – The Journey Begins

Embarkation day—surely a day filled with anticipation and quiet excitement.

The morning began with the check-in, where the adventure started to feel real. Bags were handed over, lightening your load for the journey ahead.

After a short bus ride from Longyearbyen, you arrived at the MS Spitsbergen, ready to embark on your journey.

After a first inspection of your cabin—and perhaps a little exploration of the ship—it was time for the first official program: the mandatory safety drill.

Once completed the mandatory safety drill, a welcome cocktail awaited, setting the mood for the journey ahead, followed by a warm dinner to fill the belly and hopefully a first taste of what will await you

culinarily the next days.

After dinner, the Hotel Manager and Expedition Leader officially welcomed you aboard MS Spitsbergen with a presentation full of anticipation for the journey ahead.

But the evening wasn't quite over yet.

You picked up your expedition jacket—hopefully your warm and faithful companion for the days to come—and received your rubber boots, which will carry you across the Arctic landscapes throughout the voyage.

We hope you had a smooth and enjoyable embarkation day, filled with vivid and unforgettable impressions of both Longyearbyen and your new home at sea, the Spitsbergen.





Ny-Ålesund

Legend

HX Expedition

From Briefings to Adventures: Our First Day in the Arctic

After our first night sailing north, we began the day with a few important briefings—including the mandatory AECO briefing and activity briefings for those interested in joining the hikes or kayaking later in the voyage.

In the afternoon, we arrived at our first destination: Ny-Ålesund—a peaceful and fascinating settlement known for its scientific research and rich polar history.

You could explore the area at your own pace, or join one of the

guided walks led by our expedition team. You might have visited the museum to discover the rich local history or wandered out to the historic mast where Roald Amundsen set off toward the North Pole aboard the Norge in 1926, maybe even stopped by the world's northernmost post office to send a postcard or pick up a souvenir.

As the day comes to a close, we gather once again on board to relax and attend the evening plans for tomorrow's briefing.



Amsterdamøya

Smeerenburg Polar Bear

Danskøya

Legend



 HX Expedition

1 km

© Mapbox © OpenStreetMap

Polar Bear Festival in Smeerenburg

As we made our way towards Smeerenburg, the ship dropped anchor and the zodiacs were launched. The first zodiac set off to scout the planned landing site. Everything was in place for your first step ashore—until the announcement came: our very first polar bear, spotted close to where we were supposed to land!

You could watch the bear from the decks or via the onboard live stream. But the surprises didn't end there—while many of you were watching the walrus resting on the beach, a second polar bear appeared, even closer to the landing area. A truly unforgettable start to the day.





Alicehamna

Legend



— HX Expedition

2 km

© Mapbox © OpenStreetMap

Memorable First Landing

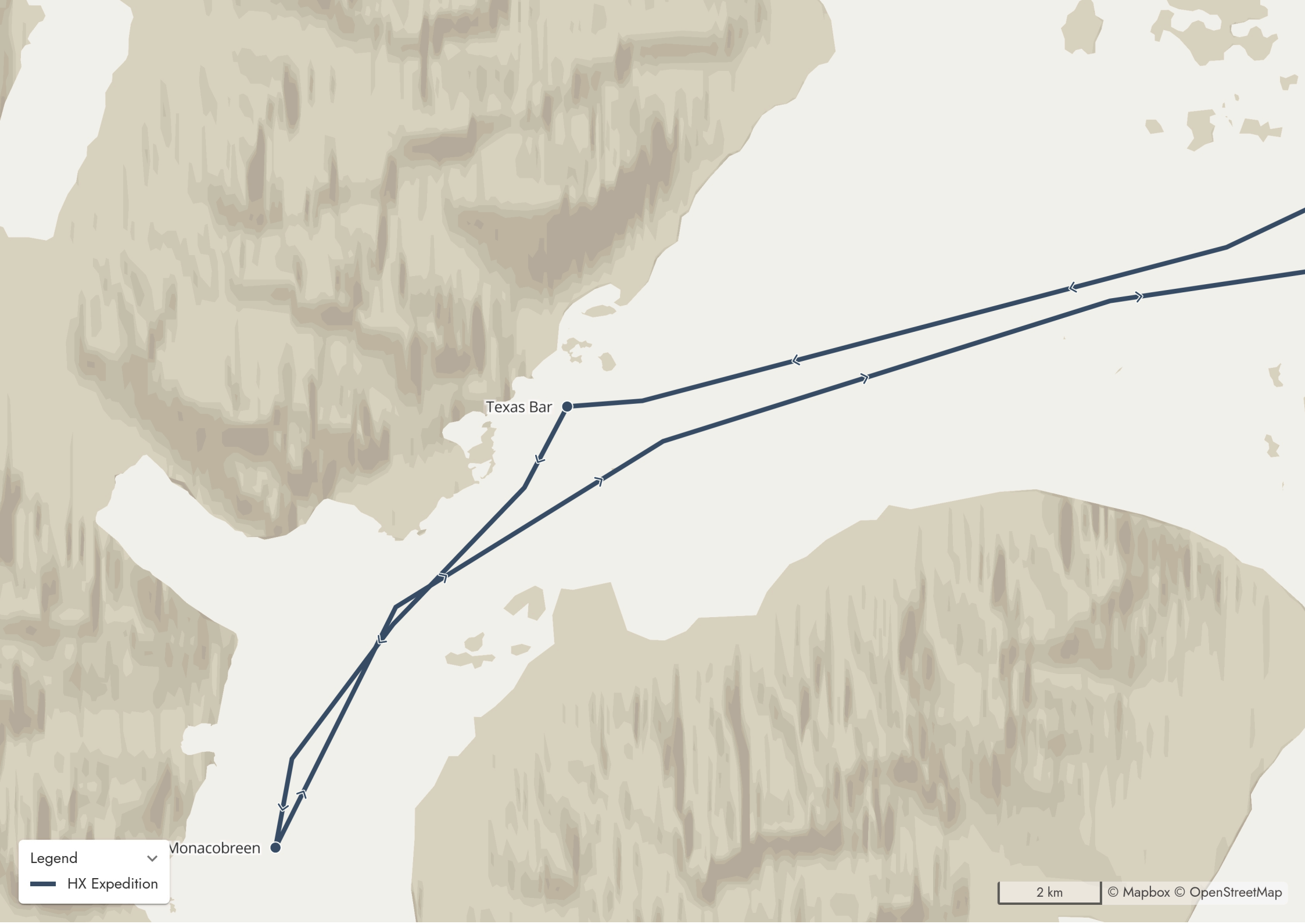
After the excitement of the morning's wildlife sightings, we continued sailing and arrived at Alicehamna—our first landing of the voyage—under clear, sunny skies, a rare treat in Svalbard. You boarded the zodiacs for the first time and were welcomed ashore by the expedition team.

From there, you could stroll along the beach to a small hunter's cabin,

or head up to the ridge, where you were rewarded with spectacular views. Our first hike turned into a snowshoe hike with Carlos and Maria leading the way.

We ended the day with a highlight for the brave: the legendary polar plunge.





Texas Bar

Monacobreen

Legend

HX Expedition

A Morning Visit to Texas Bar

Our second landing of the voyage took place in the morning at Texas Bar—despite the name, not a bar at all, but a small hunter's cabin tucked away in the northwestern part of Svalbard. Surrounded by rugged hills and wide Arctic landscapes, the site offered a quiet, atmospheric glimpse into the region's trapping history.

Before you went ashore, the expedition team set up a polar bear guard perimeter to ensure the landing area was safe. Once on land,

you were lucky enough to spot a Svalbard reindeer grazing nearby. Some of you joined a hike that led to higher ground, offering beautiful views over the surrounding terrain and toward the Monacobreen glacier, which we would approach later in the day. Although the skies were more overcast than the day before, a few courageous passengers still took part in the daring polar plunge, diving into the chilling Arctic waters.





Monacobreen

Legend



 HX Expedition

1 km

© Mapbox © OpenStreetMap

Glaciers of Liefdefjorden

In the afternoon, we embarked on our first zodiac cruising of the expedition, led by the expedition team. As we navigated through the Arctic waters, floating ice and drifting icebergs created a stunning, ever-changing landscape.

Although the ice conditions meant we couldn't get very close to Monacobreen, we explored nearby glaciers such as Seligerbreen and Emmabreen, each with their own spectacular icy fronts.

Back on board, Julia shared her knowledge during an engaging presentation about the birds of Svalbard. We ended the day with Bernardo's tiny talk, where he delved into the fascinating history and traditions of trapping in Svalbard.

Tomorrow, we venture further into the Arctic, where new landscapes and surprises await just beyond the horizon.



Legend

— HX Expedition



Exploration Day at 81° North

We spent the day far up north, at 81 degrees, right in the ice edge. The conditions weren't very gentle—pretty normal for these latitudes—but that just made the experience more real.

We started the day off right with a deck event that included waffles and music.

Throughout the day, there were plenty of activities on board. We learnt about cloud observations and data collection for NASA, started

the Knit & Natter group, and made our very own polar bears out of clay.

The day ended as the MS Spitsbergen approached Moffen Island, a small, remote piece of land that serves as an important resting spot for walruses. We were lucky to see a large group of walruses resting on the shore—a great way to finish the day with observing wildlife.





Alkefjellet

Torellneset

Legend

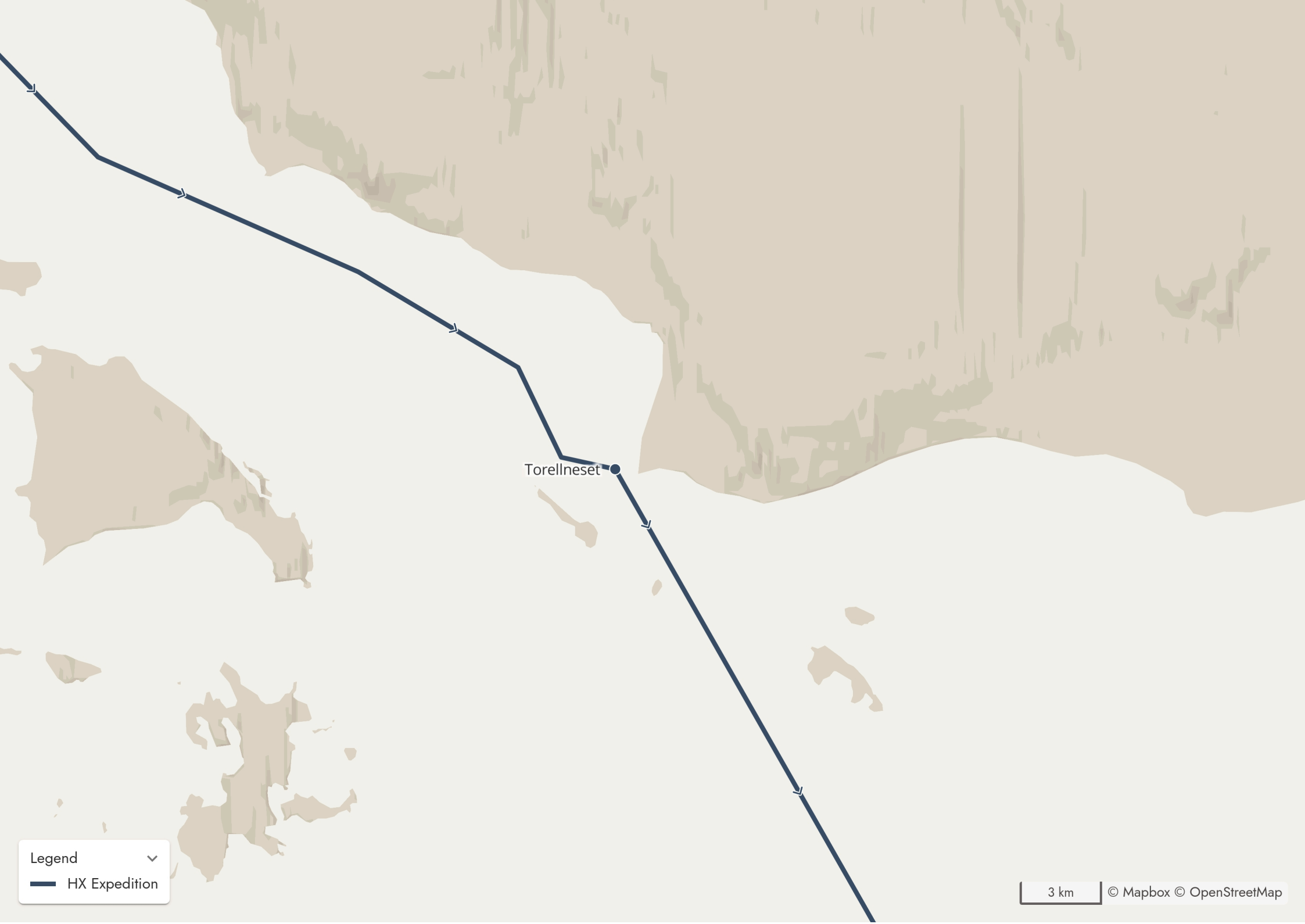
HX Expedition

Sky Full of Birds

In the morning, we visited the spectacular cliffs of Alkefjellet, home to thousands of nesting seabirds, including brünnich's guillemots, kittiwakes, and various gulls. The air was filled with sound — the flapping of wings, constant calls, and the sheer energy of a bustling

seabird colony echoing off the cliffs. We explored the area via our zodiacs, gliding beneath the towering cliffs for a closer look at the alluring birdlife, while the first kayak group of the voyage set out and enjoyed a calm and scenic paddle along the coastline.





Torellneset

Legend

— HX Expedition

3 km

© Mapbox © OpenStreetMap

In the Company of Walruses

Before arriving, several groups of walrus were spotted sprawled along the coast, prompting a swift change to our planned landing site. One of them was even seen resting beside a large piece of ice, perfectly relaxed and completely unbothered by our presence.

Once ashore, many of us took a peaceful walk along the beach to observe the walruses from a respectful distance — some of them

resting on the sand, while others swam just offshore, their heads bobbing above the surface as they curiously observed our arrival. When we set back onboard, one last surprise awaited us. A polar bear appeared as we sailed away, close enough to see perfectly from the outside deck or comfortably through the Explorer Bar's GSS camera.





Storfjorden

Habenichtbukta

Edgeøya
Sørøst-Svalbard
naturreservat

Legend

— HX Expedition

A Foggy Day and a Polar Bear Surprise

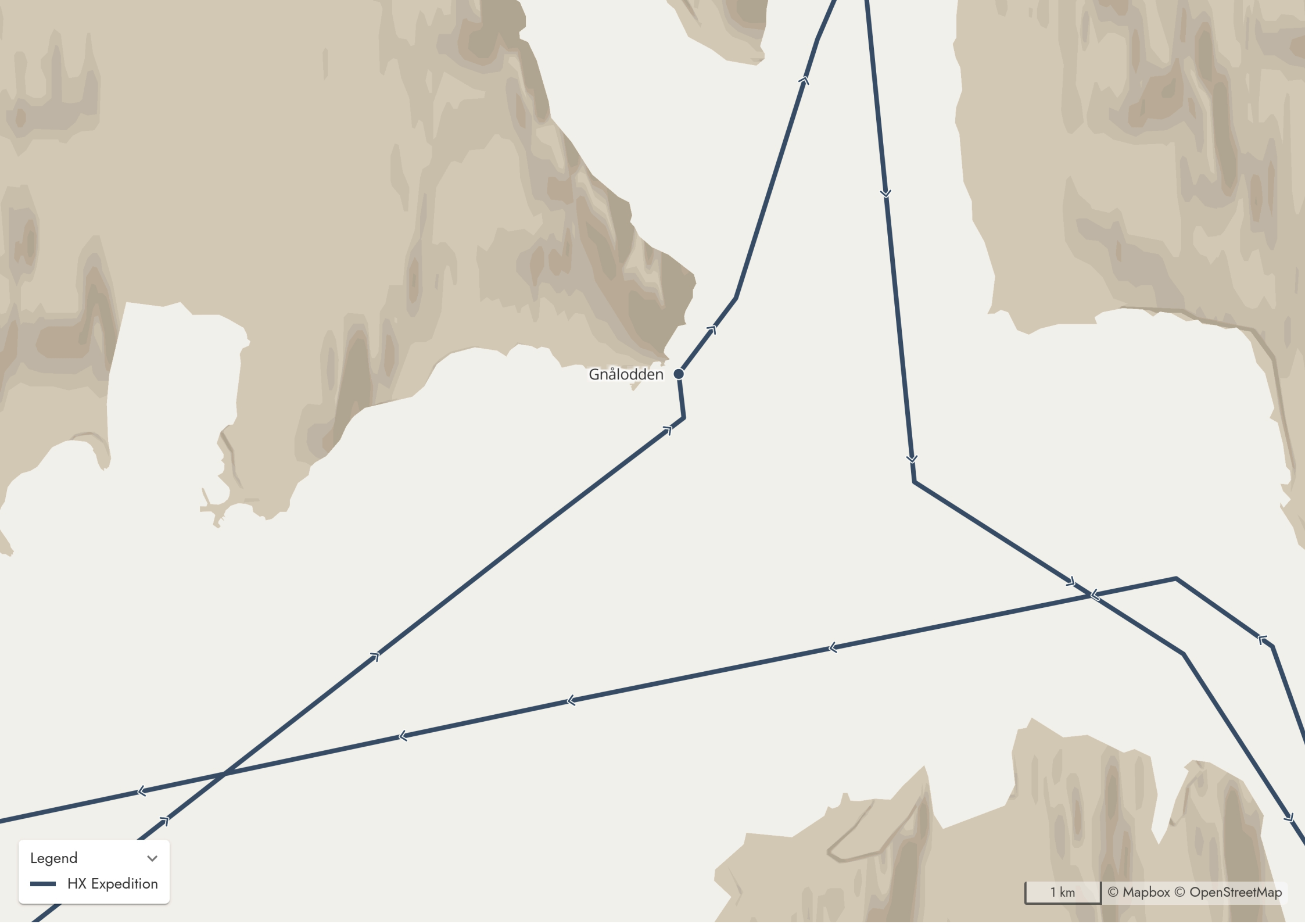
Habenichtbukta was not our original destination for the day. During breakfast onboard, we watched dense fog slowly creep and envelop the surrounding area we had planned to visit, prompting a swift change of plans.

While scouting from the bridge, we were thrilled to spot a polar bear in the distance. We watched the marine mammal through the GSS camera for a while until it disappeared into the wilderness. Since

landing was not possible, we decided to explore by zodiac cruising close to the striking basalt cliffs and passing near the spot where the bear had been just hours before.

It's remarkable how quickly an Arctic day can change — from fog-bound uncertainty to unexpected wildlife encounters and spontaneous adventures.





Gnålodden

Legend



— HX Expedition

1 km

© Mapbox © OpenStreetMap

Arctic Morning at Gnålodden: Cliffs and Calm

As we continued our journey toward Hornsund, which, despite its name, is actually a fjord rather than a sound, we arrived at Gnålodden under a calm, overcast sky. The rugged cliffs here are home to flocks of kittiwakes, Brünnich's guillemots, and fulmars, filling the air with their wings and calls. Near the shore, a small cabin stands quietly and

amidst the tundra.

As we explored, we were lucky to see belugas swimming gracefully in nearby waters. On land, a lone Arctic fox moved silently across the tundra, completing a day full of memorable wildlife encounters.





Burgerbukta

Gnålodden

Legend

HX Expedition

Discovering Burgebukta's Wild Beauty

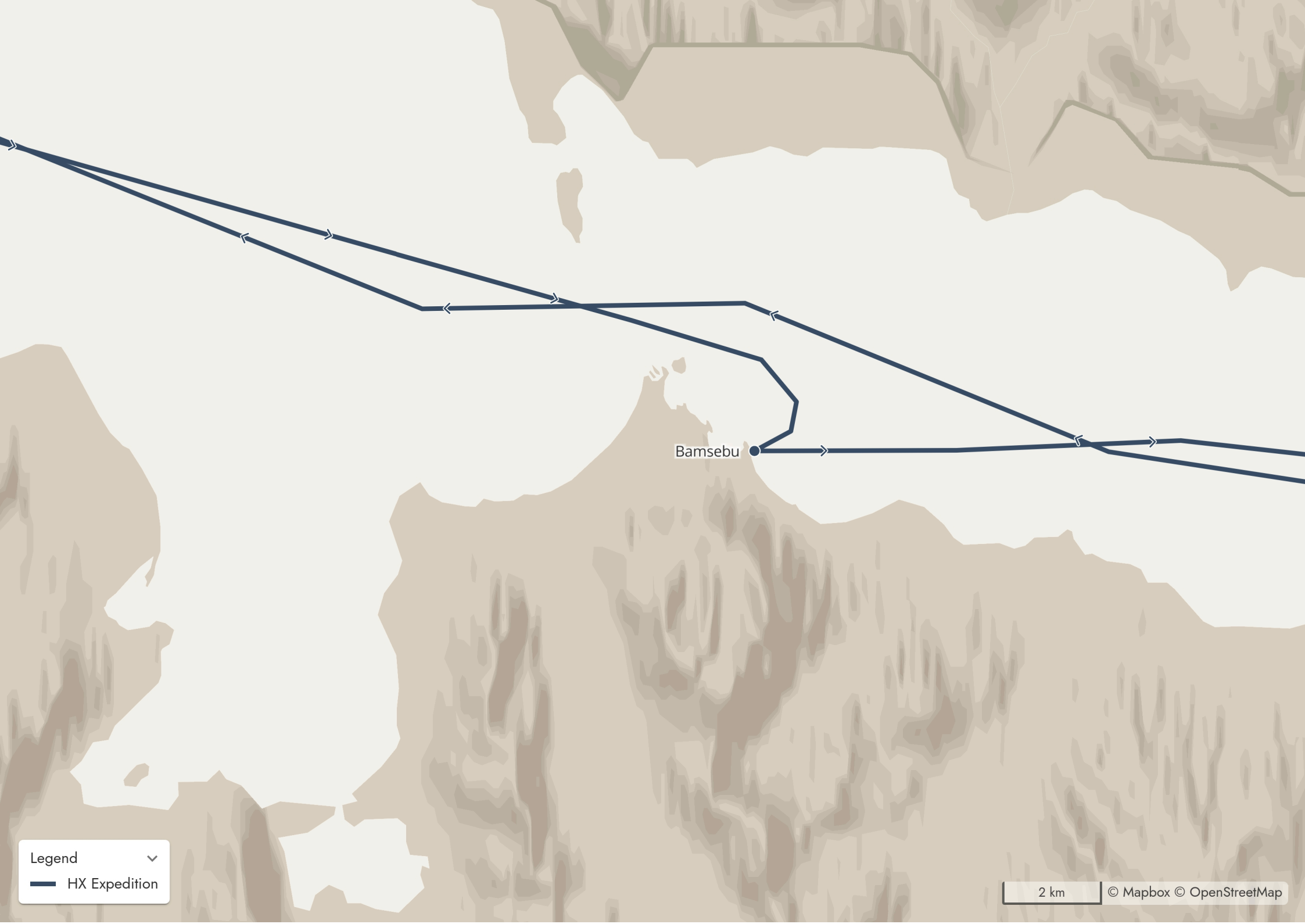
In the afternoon, after a short sail, we arrived at Burgebukta, where towering ridges and rugged cliffs framed the serene Arctic waters. Once again, our zodiacs were launched for another exciting exploration.

We began with a session of science boat for a small group while the rest of us, after a small ride by zodiac, arrived to the landing site where the top of the ridge was the highlight of the afternoon. There, Lauren was waiting with stunning panoramic views of Burgebukta and the surrounding Arctic landscape. From this vantage point, we could

fully appreciate the rugged geology—the layers of ancient rock and steep cliffs that tell the story of the region's dramatic natural history. As we explored the area, Arctic terns and kittiwakes soared overhead. Nearby, some of our group enjoyed the last kayaking along the calm waters.

The combination of adventure, science, and nature made this afternoon at Burgebukta a truly memorable part of our journey.





Bamsebu

Legend

— HX Expedition

2 km

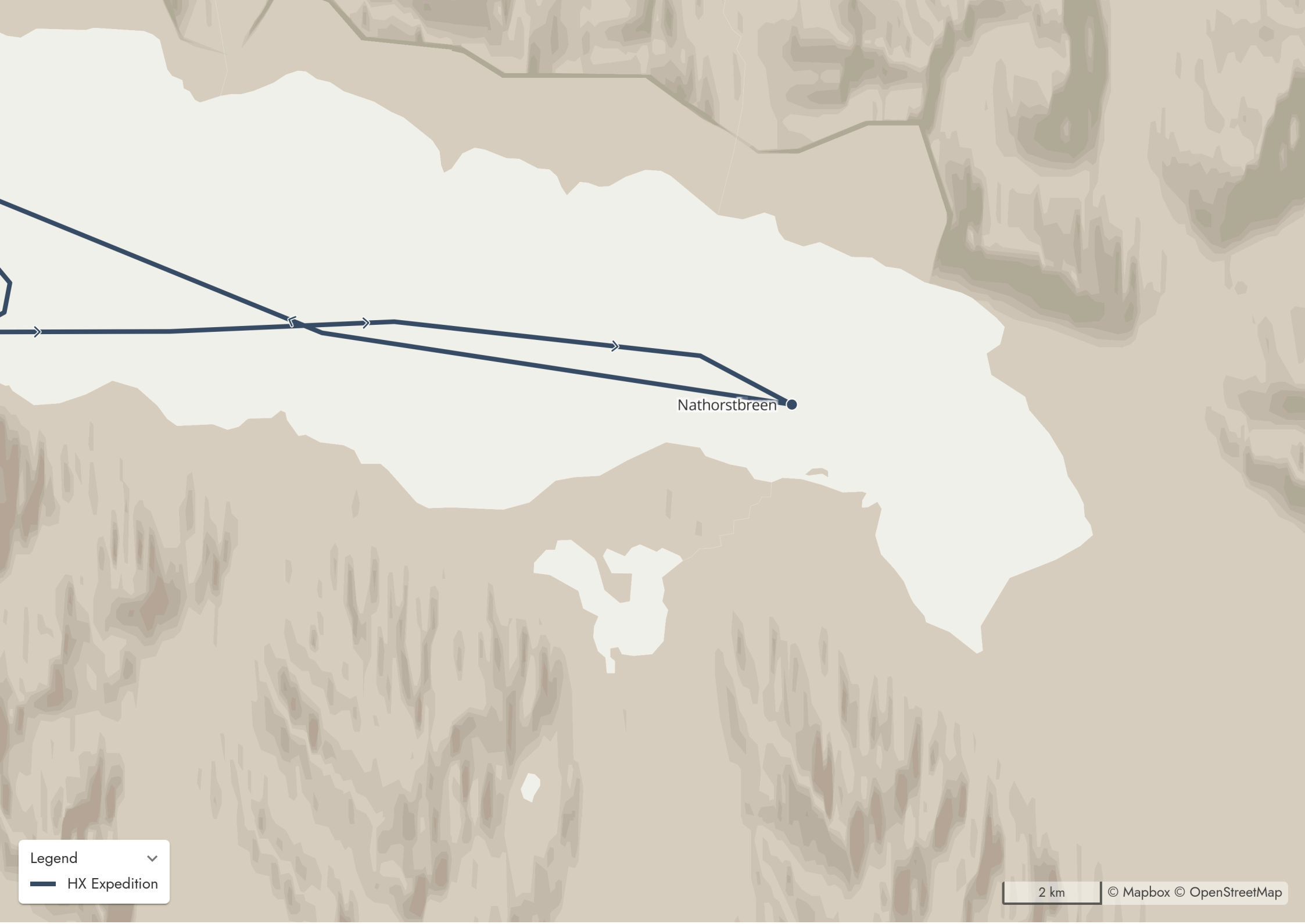
© Mapbox © OpenStreetMap

Last Steps Ashore

This morning, we arrived at Bamsebu under perfect conditions for our last landing of the voyage. The Expedition Team, as usual, greeted us on the beach, and from there we set off to explore one final time. Some of us visited the old cabin, others walked to the cairn, while a few stopped to observe the beluga bones scattered along the shore—silent remnants of the past. We were even lucky enough to spot a couple of bearded seals, who paid us a visit near the landing site. In the distance, small white dots moved slowly across the landscape: a group of reindeer, calmly enjoying the warmth of the Arctic morning.

Further along the horizon, we could just make out a line of people—our hikers!—once again stepping beyond the perimeter, guided by Carlos and Maria, making the most of this final chance to explore. Perfect conditions for our final landing, even though one last activity still lay ahead.





Nathorstbreen

Legend



— HX Expedition

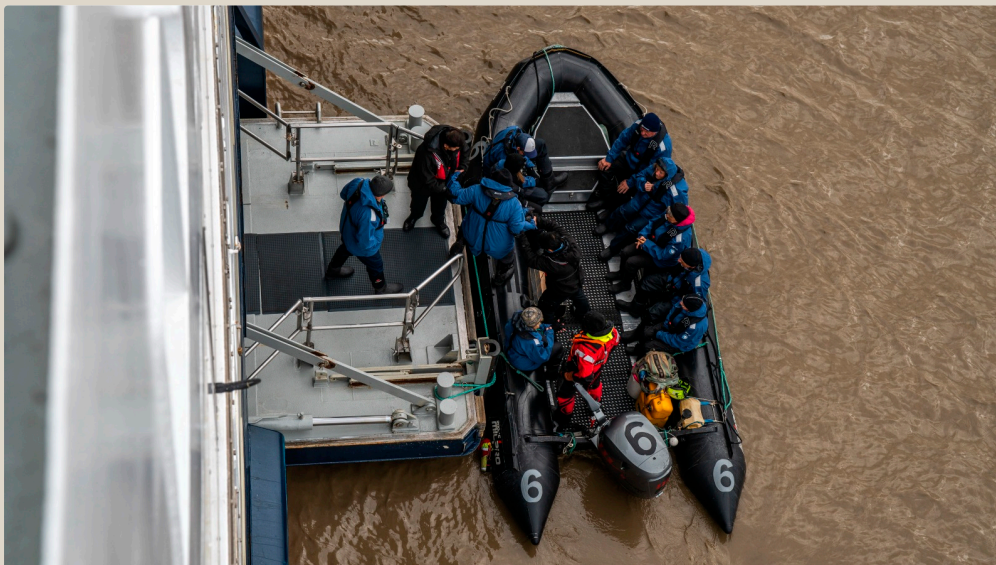
2 km

© Mapbox © OpenStreetMap

Last Cruising of the Voyage

Our final adventure was a zodiac cruise at Nathorstbreen Glacier. Floating close to the towering ice walls, we admired the striking brown waters—stained by glacier sediment, a vivid reminder of nature’s raw power. Once onboard, after heartfelt farewells with the

science team, we had a final gathering with the captain in the Explorer Bar. The day ended with an emotional slideshow by Timo, capturing the magic of our journey and leaving us with unforgettable memories.





Disembarkation — Farewell

After one final breakfast on board, guests took their final moments to say goodbye to MS Spitsbergen. They gathered at the gangway, where the familiar “Goodbye!” echoed one last time over the scan. As the bus pulled away from the pier, the Expedition Team ran alongside, waving and sending off warm wishes for a safe journey

ahead. A beautiful farewell to a truly special voyage.

Although we leave Svalbard behind, the memories made in these remote, icy lands will remain with us—quiet, powerful, and unforgettable.





logbook.travelmap.net/20250629-sbspi2509