

The background of the slide features a deep blue underwater scene with two whales. A large, semi-transparent watermark consisting of the Roman numerals 'IX' is positioned on the left side of the image. The text 'Science & Education Report' is centered horizontally across the middle of the image.

Science & Education Report

MS Spitsbergen

08.07. – 20.07.2025

Circumnavigating Svalbard
The Ultimate Expedition





Science & Education Program

Our Science and Education Team accompanied you during your expedition to the remote nature of the Svalbard archipelago.

We had the opportunity to explore our destination's natural beauty, exceptional wildlife, and rich history. We organized lectures and interactive activities onboard and explored our destinations during landings, nature walks, and from the water.

History & Culture

During our expedition, we visited historical sites that provided insight into Svalbard's early human activity.

At former trapping and whaling stations, simple wooden cabins told the story of the individuals who lived and overwintered in this remote Arctic region. These visits offered a glimpse into the harsh conditions of the past and highlighted the resilience, adaptability, and resourcefulness required to survive in such an extreme environment.



History & Culture

In Ny-Ålesund, we explored the transformation of Svalbard from a resource-based settlement to a hub of international scientific collaboration.

Once a coal mining town, Ny-Ålesund is now the northernmost year-round research community in the world. Here, scientists from multiple nations conduct critical research on climate change, Arctic ecology, and environmental monitoring, illustrating the region's growing importance in global scientific efforts.



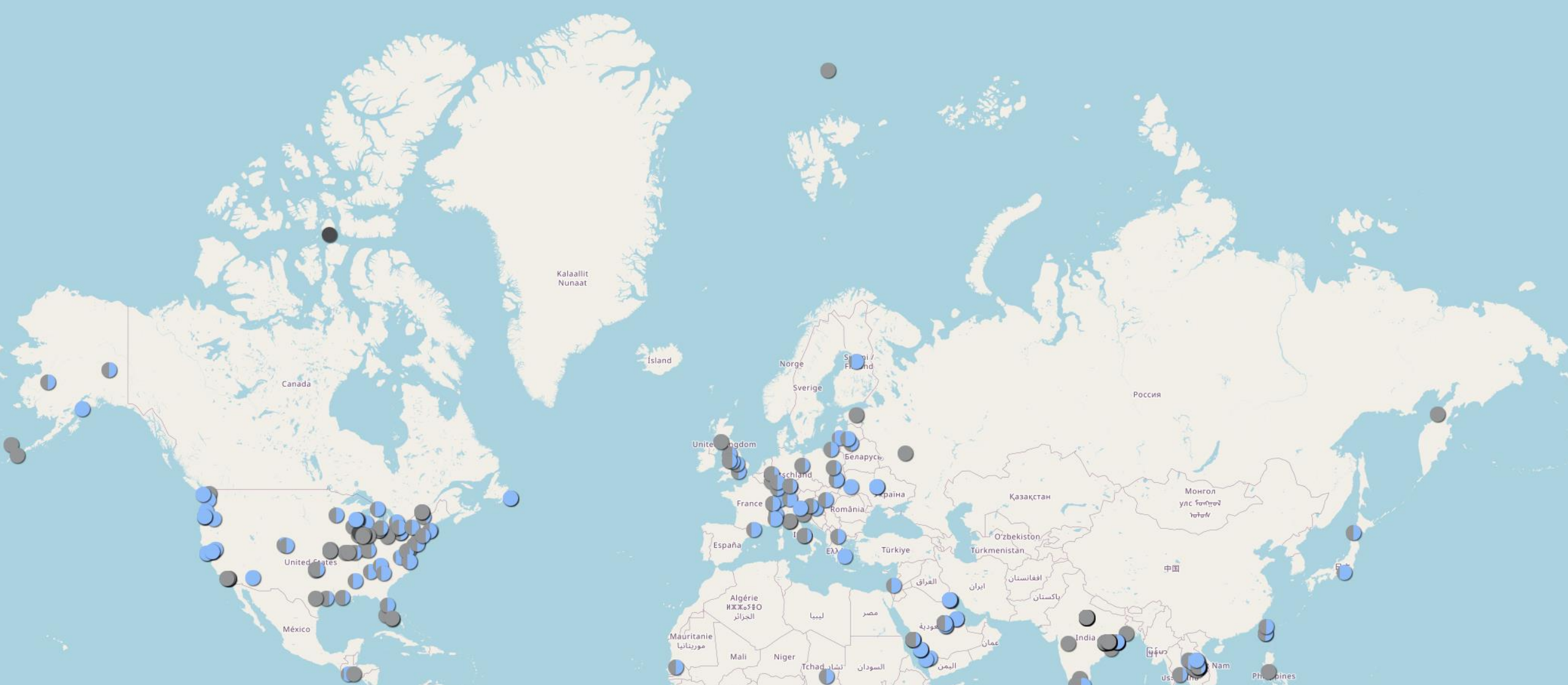


NASA Globe Cloud Observer

Together with our Environmental Scientist Jean you observed the clouds and submitted your observations to NASA GLOBE Observer on 3 occasions to ground truth data collected by satellites.

These cloud observations can help NASA improve our understanding of Earth's atmosphere and climate by providing valuable data for scientific research and climate modelling.

[View our data](#) on the global map



Cloud Cover data from various locations around the world on 13 July 2025, including yours — the furthest North!

iNaturalist

Throughout our expedition, we documented the flora and fauna of Svalbard and uploaded all our findings to biodiversity platform iNaturalist.

During our voyage, we submitted 541 observations of 107 different species. This effort contributes to building a comprehensive understanding of the current distribution of species in the archipelago and can aid researchers in their ongoing studies and conservation efforts to protect these species.

View our data submitted on our [iNaturalist project](#)

Moss campion (*Silene acaulis*)





Science Boat

Fourty four eager participants joined our six Science Boats in Kinnvika, Texas Bar, Kapp Lee, Burgerbukta, Gnålodden and Calypsobyen to study plankton and the hydrography of our destination.

They helped monitor ocean clarity through participation in the Secchi Disk citizen science study, contributing to important research on the distribution of phytoplankton blooms.

[View our data](#) submitted to the Secchi Disk Project



Small planktonic medusa of *Sarsia* sp.

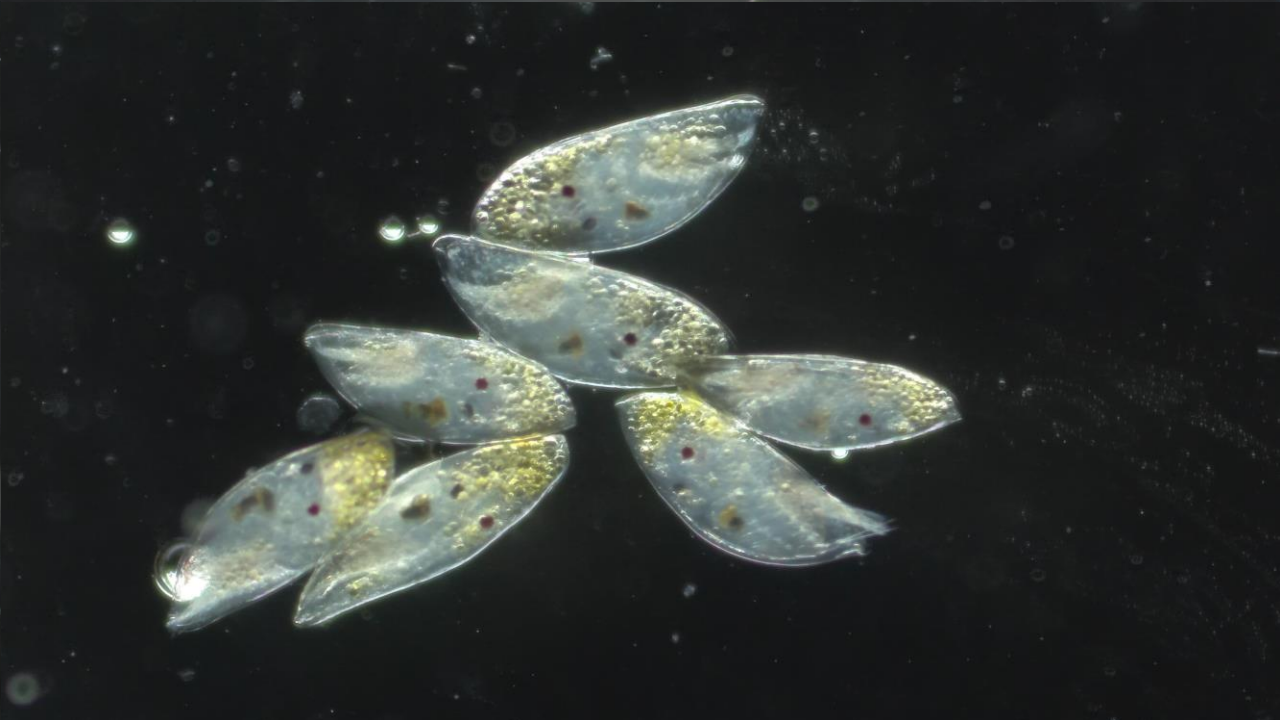
Plankton Samples

We also collected samples by towing a plankton net behind our science boats and explored the microscopic world of the tiny organisms that drift in our ocean, under the microscopes in our Science Center.

In the plankton samples collected from Gnålodden and Calypsobyen, we found large amounts of copepods; the keystone species of the marine food web in the Arctic.

During our discovery session, we also observed various types of zooplankton, such as the small planktonic medusa captured in the picture.

Various crustacean zooplankton collected during our Science Boats.





EPIC Project

During our Science Boats, we also collected environmental DNA samples for the EPIC (Innovative approaches to understanding marine pelagic ecosystems through eDNA biodiversity data) project of the University of Bergen.

Our samples will contribute to groundbreaking research by capturing eDNA from the waters we traversed, helping to build a comprehensive picture of marine biodiversity in the North Atlantic-Arctic interface. This effort supports the scientific community in monitoring ecosystem health and understanding the impacts of environmental changes.



Kinnvika | 33.4kg marine litter collected

Beach Clean-up

Over the course of our voyage, we participated in the Clean up Svalbard initiative.

Together, we collected around 130 kg of general litter, fishing lines and nets that washed up on the shores of Svalbard.

Our efforts in the Clean up Svalbard initiative contributed directly to the preservation of Arctic ecosystems, enhancing environmental sustainability and fostering a cleaner, healthier future for the region.



Wildlife List - Birds





Arctic Tern — Küstenseeschwalbe — Sterne Arctique



Ivory Gull — Elfenbeinmöwe — Mouette Blanche



Black Guillemot — Gryllteiste — Guillemot à miroir



Common Eider — Eiderente — Eider à duvet

Wildlife List – Seabirds

SCIENTIFIC NAME	ENGLISH	DEUTSCH	FRANÇAIS
<i>Fulmarus glacialis</i>	Northern Fulmar	Eissturmvogel	Fulmar boréal
<i>Stercorarius skua</i>	Great Skua	Große Raubmöwe	Grand Labbe
<i>Stercorarius parasiticus</i>	Arctic Skua (Parasitic Jaeger)	Schmarotzerraubmöwe	Labbe parasite
<i>Rissa tridactyla</i>	Black-legged Kittiwake	Dreizehenmöwe	Mouette tridactyle
<i>Xema sabini</i>	Sabine's Gull	Schwalbenmöwe	Mouette de Sabine
<i>Pagophila eburnea</i>	Ivory Gull	Elfenbeinmöwe	Mouette blanche
<i>Larus hyperboreus</i>	Glaucous Gull	Eismöwe	Goéland Bourgmestre
<i>Sterna paradisaea</i>	Arctic Tern	Küstenseeschwalbe	Sterne Arctique
<i>Alle alle</i>	Little Auk	Krabbentaucher	Mergule nain
<i>Fratercula arctica</i>	Atlantic Puffin	Papageitaucher	Macareux moine
<i>Cephus grylle</i>	Black Guillemot	Gryllteiste	Guillemot à miroir
<i>Uria lomvia</i>	Brünnich's Guillemot (Thick-billed Murre)	Dickschnabellumme	Guillemot de Brünnich

Wildlife List — Water birds

SCIENTIFIC NAME	ENGLISH	DEUTSCH	FRANÇAIS
<i>Anser brachyrhynchus</i>	Pink-footed Goose	Kurzschnabelgans	Oie à bec court
<i>Branta leucopsis</i>	Barnacle Goose	Weißwangengans	Bernache nonnette
<i>Branta bernicla</i>	Brent Goose	Ringelgans	Bernache cravant
<i>Somateria mollissima</i>	Common Eider	Eiderente	Eider à duvet
<i>Somateria spectabilis</i>	King Eider	Prachteiderente	Eider à tête grise
<i>Clangula hyemalis</i>	Long-tailed Duck	Eisente	Harelde kakawi
<i>Gavia stellata</i>	Red-throated Diver (Red-throated Loon)	Stern-Taucher	Plongeon catmarin
<i>Charadrius hiaticula</i>	Common Ringed Plover	Sandregenpfeifer	Pluvier grand-gravelot
<i>Calidris maritima</i>	Purple Sandpiper	Meerstrandläufer	Bécasseau violet
<i>Phalaropus fulicarius</i>	Red Phalarope (Grey Phalarope)	Thorshühnchen	Phalarope à bec large

Wildlife List — Land birds



SCIENTIFIC NAME	ENGLISH	DEUTSCH	FRANÇAIS
<i>Plectrophenax nivalis</i>	Snow Bunting	Schneeammer	Bruant des neiges



eBird

During our Wildlife Watches and landings, our Ornithologist Julia and Marine Scientist Lauren conducted detailed bird surveys, recording observations for the citizen science platform eBird. A total of 18 bird species were recorded across 17 checklists.

This initiative helps contribute valuable data to global bird conservation efforts, enhancing our understanding of bird populations and their habitats.

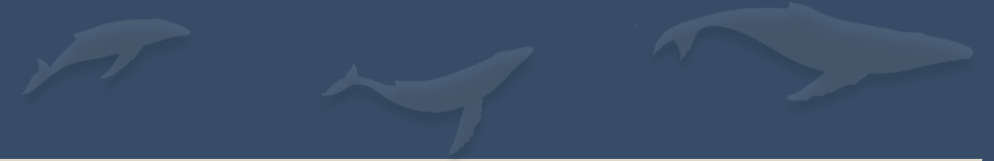
View our data on our [e-Bird trip report](#)

Wildlife List - Marine Mammals





Wildlife List – Marine Mammals



SCIENTIFIC NAME	ENGLISH	DEUTSCH	FRANÇAIS
<i>Balaenoptera acutorostrata</i>	Common Minke Whale	Zwergwal	Rorqual à Museau Pointu
<i>Balaenoptera physalus</i>	Fin Whale	Finnwal	Rorqual Commun
<i>Megaptera novaeangliae</i>	Humpback Whale	Buckelwal	Baleine à Bosse
<i>Delphinapterus leucas</i>	Beluga, White Whale	Beluga, Weißwal	Bélouga
<i>Phoca vitulina</i>	Harbour Seal, Common Seal	Seehund	Phoque Commun
<i>Pusa hispida</i>	Ringed Seal	Ringelrobbe	Phoque Annelé
<i>Pagophilus groenlandicus</i>	Harp Seal	Sattelrobbe	Phoque du Groenland
<i>Erignathus barbatus</i>	Bearded Seal	Bartrobbe	Phoque Barbu
<i>Odobenus rosmarus</i>	Walrus	Walross	Morse
<i>Ursus maritimus</i>	Polar Bear	Eisbär	Ours Blanc

Wildlife List - Land Mammals



Wildlife List – Land mammals



SCIENTIFIC NAME	ENGLISH	DEUTSCH	FRANÇAIS
<i>Rangifer tarandus ssp. platyrhynchus</i>	Svalbard Reindeer	Spitzbergen-Ren	Renne de Svalbard
<i>Vulpes lagopus</i>	Arctic Fox	Polarfuchs	Renard Arctique



**Connect with your
inner scientist**

IX

