



Science & Education Report

MS FRAM



Citizen Science

NASA Globe Observer

We Collected 2 observations for NASA. You can [view our data](#) on the global map.

Inaturalist

We submitted 64 observations to Inaturalist. [You can view our observations by clicking here.](#)

Ebird

We submitted 17 checklists to Ebird. You can view the [trip report for your voyage by clicking here.](#)

Trash-o-Meter:

MS Fram is on a mission to collect ocean waste in the isolated locations we visit.



Statistics so far:

So far we have collected:
Weight: 2.8 KG

On our voyage we collected a total:
Weight: 30.6 KG

Combined weight of waste removed during
our voyage:

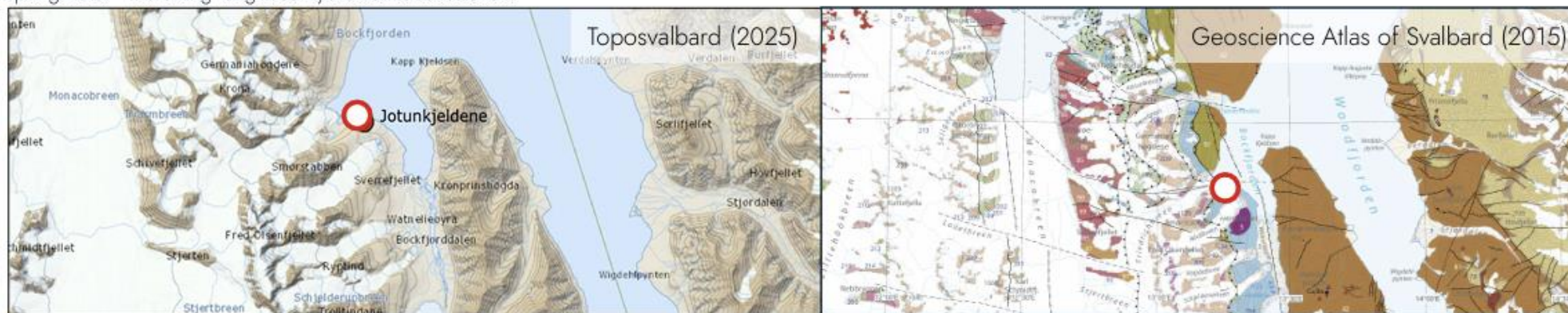
32.9 KG

Thank you for helping clean up the Arctic.



18.06.2025: Jotunkjeldene, Bockfjorden. (79.45461°N, 13.28395°E).

Jotunkjeldene is a geothermal area in Bockfjorden, notable for its warm springs—a rare phenomenon in the Arctic. The springs emerge along fault zones cutting through Precambrian basement rocks, including gneiss and quartzite, which form the rugged terrain of the Bockfjorden Basement Complex. The geothermal heat source is believed to be residual heat from Tertiary magmatism, associated with the opening of the North Atlantic and formation of the West Spitsbergen Fold-and-Thrust Belt. This magmatic activity is part of the same tectonic regime that formed the volcanic province on nearby Sørkapp Land and on Jan Mayen. The area is also rich in travertine deposits—formed by the precipitation of carbonate minerals from the warm spring water—indicating long-lived hydrothermal circulation.



Ashton McDonald (2025)



Ashton McDonald (2025)



Ashton McDonald (2025)



Ashton McDonald (2025)

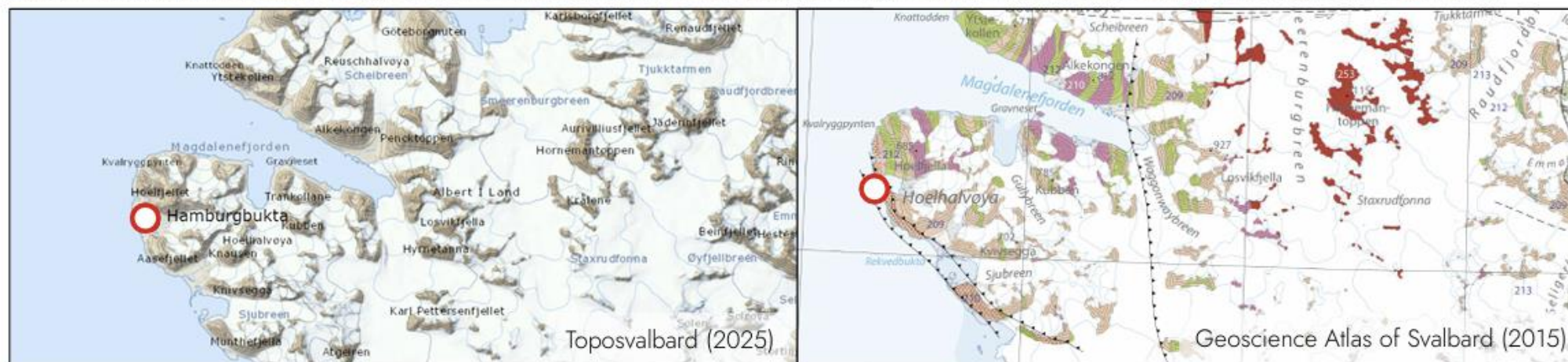


Ashton McDonald (2025)

- 81** Wood Bay Formation (Proterozoic - Emsian): Verduen Member: multicoloured sandstone with yellowish limestone interbeds
- 82** Dicksonfjorden Member: red sandstone, shale
- 5** **Bockfjorden Volcanic Complex (Pleistocene):** Bockfjorden Volcanic Complex: basic pyroclastics, agglomerate and lava
- 194** **Northwestern Spitsbergen:** Krossfjorden Group: Generalifjella Formation: Undifferentiated: marble and dolomite marble

017.06.2025: Hamburgbukta, Hoelhalvoya. (79.53001'N, 10.69661'E)

Hamburgbukta and Hoelhalvøya expose some of the oldest rocks in Svalbard, primarily composed of high-grade metamorphic rocks such as marble, schist, and gneiss. These rocks are part of the Nordfjorden Block, a tectonic basement unit likely dating back to the Proterozoic. The marbles here were originally deposited as limestones in shallow marine settings, later metamorphosed during major orogenic events—most significantly the Caledonian orogeny (~430–390 Ma), when Svalbard was involved in continent–continent collision between Laurentia and Baltica. These rocks are strongly deformed, folded, and cut by later fault systems, reflecting Svalbard's complex tectonic evolution at the margin of the Barents Shelf.



Ashton McDonald (2025)



Ashton McDonald (2025)



Ashton McDonald (2025)



Ashton McDonald (2025)

Smeerenburgfjorden Complex:

| | |
|-----|----------------------------------|
| 208 | Late-tectonic granite |
| 209 | Migmatite |
| 210 | Migmatite with aplites |
| 211 | Granitic orthogneiss |
| 212 | Banded gneiss |
| 213 | Marble with skarn mineralisation |
| 214 | Porphyroblastic gneiss |
| 215 | Fine-grained felsic gneiss |
| 216 | Quartzite |

Wildlife List - Marine & Land Mammals



Marine Mammals - Wildlife List - MS FRAM 15/06 to 24/06 2025

[illegible]

Land Mammals - Wildlife List - MS FRAM 15/06 to 24/06 2025

[illegible]

Wildlife List — Birds



Birds - Wildlife List - MS FRAM 15/06 to 24/06 2025

| Scientific Name | English | Deutsch | Francais | Norsk | 15/06 | 16/06 | 17/06 | 18/06 | 19/06 | 20/06 | 21/06 | 22/06 | 23/06 | 24/06 |
|---------------------------------|--------------------------------------|---------------------|-------------------------|------------------|-------|-------|-------|-------|-------|-------|-------|-------|-------|-------|
| <i>Stercorarius parasiticus</i> | Arctic Skua/ Parasitic Jaeger | Schmarotzerraubmöwe | Labbe parasite | Tyvjo | | | X | | X | X | | | X | |
| <i>Sterna paradisaea</i> | Arctic Tern | Küstenseeschwalbe | Sterne arctique | Rødnebbterne | | X | X | X | X | X | X | X | X | |
| <i>Fratercula arctica</i> | Atlantic Puffin | Papageitaucher | Macareux moine | Lunde | | | X | | | X | | | | |
| <i>Cephus grylle</i> | Black Guillemot | Gryllteiste | Guillemot à miroir | Teist | | X | X | X | X | X | X | X | X | |
| <i>Rissa tridactyla</i> | Black-legged Kittiwake | Dreizehenmöwe | Mouette tridactyle | Krykkje | | X | X | X | X | X | X | X | X | |
| <i>Branta bernicla</i> | Brant Goose | Ringelgans | Bernache cravant | Ringgås | | | | X | | | | | | |
| <i>Uria lomvia</i> | Brünnich's Guillemot | Dickschnabellumme | Guillemot de Brünnich | Polarlomvi | X | X | X | X | X | X | X | X | | |
| <i>Somateria mollissima</i> | Common Eider | Eiderente | Eider à duvet | Ærfugl | X | X | X | X | X | X | X | X | X | |
| <i>Charadrius hiaticula</i> | Common Ringed Plover | Sandregenpfeifer | Pluvier grand-gravelot | Sandlo | | | | | | X | | | | |
| <i>Calidris alpina</i> | Dunlin | Alpenstrandläufer | Bécasseau variable | Myrsnipe | | X | | | | | | | | |
| <i>Larus hyperboreus</i> | Glaucous Gull | Eismöwe | Goéland bourgmestre | Polarmåke | | X | X | X | X | X | | X | X | |
| <i>Phalaropus fulicarius</i> | Grey/Red Phalarope | Thorshühnchen | Phalarope à bec large | Polarsvømmesnipe | | X | | | | | | | | |
| <i>Alle alle</i> | Little Auk/Dovekie | Krabbentaucher | Mergule nain | Alkekonge | | X | X | | | X | X | | X | |
| <i>Clangula hyemalis</i> | Long-tailed Duck | Eisente | Harelde kakawi | Havelle | | X | | | | | | X | | |
| <i>Stercorarius longicaudus</i> | Long-tailed Skua/Jaeger | Falkenraubmöwe | Labbe à longue queue | Fjelljo | | | | X | | | | | | |
| <i>Fulmarus glacialis</i> | Northern Fulmar | Eissturmvogel | Fulmar boréal | Havhest | X | X | X | X | | X | X | X | X | |
| <i>Anser brachyrhynchus</i> | Pink-footed Goose | Kurzschnabelgans | Oie à bec court | Kortnebbgås | | | X | | | | | | X | |
| <i>Calidris maritima</i> | Purple Sandpiper | Meerstrandläufer | Bécasseau violet | Fjæreplytt | | X | | X | X | X | X | X | X | |
| <i>Gavia stellata</i> | Red-throated Diver/Loon | Sternaucher | Plongeon catmarin | Smålom | | X | | | | X | X | X | | |
| <i>Lagopus mytus</i> | Rock Ptarmigan | Alpenschneehuhn | Lagopède alpin | Fjelltype | | | | X | | X | | X | | |
| <i>Arenaria interpres</i> | Ruddy Turnstone | Steinwälzer | Tournepieuvre à collier | Steinvender | | | | X | | X | | | | |
| <i>Calidris alba</i> | Sanderling | Sanderling | Bécasseau sanderling | Sandløber | | | | | | X | | | | |
| <i>Plectrophenax nivalis</i> | Snow Bunting | Schneeammer | Plectrophane des neiges | Snøspurv | | X | X | X | | X | | X | X | |
| <i>Branta leucopsis</i> | Barnacle Goose | Weisswangengans | Berache nonnete | Huitkinngås | X | X | X | X | | X | X | X | X | |



IX

Connect with your
inner scientist