



Science & Education Report

MS FRAM



NASA Globe Cloud Observer

Together with Laura and Ashton, you collected 1 observation of clouds for the citizen science project of NASA.

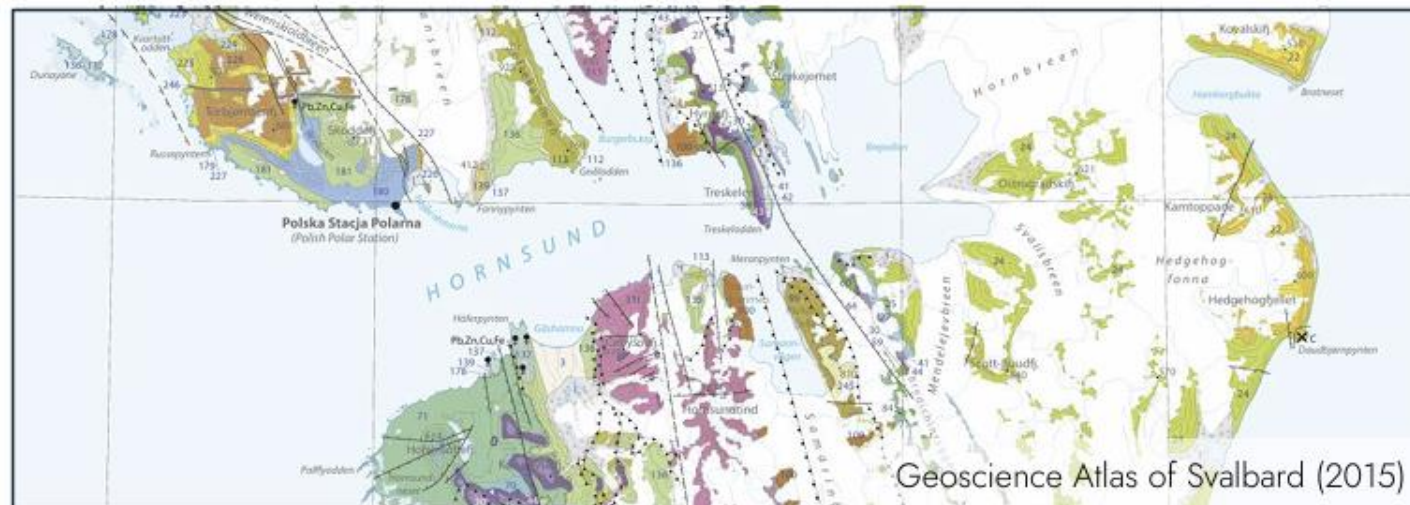
[View our data](#) on the global map



Beach clean-up

MS Fram is on a mission to collect ocean waste in the isolated locations we visit. We collected 1.24kg of ocean waste during our voyage.

09.06.2025: Burgerbukta, Hornsund. (77.03875°N, 15.95512°E)

**Hornsund:****Deilegga Group** (correlative of Nordbukta Group):

178 Undifferentiated: marble, quartzite and phyllite

Hornsund - Sørkapp Land:

99 Adriabukta Formation (Late Devonian or Early Carboniferous): polymict conglomerate in lower part, sandstone, shale

100 Marietoppen Formation (Pragian - Eifelian): multicoloured sandstone, shale

Hornsund - Sørkapp:

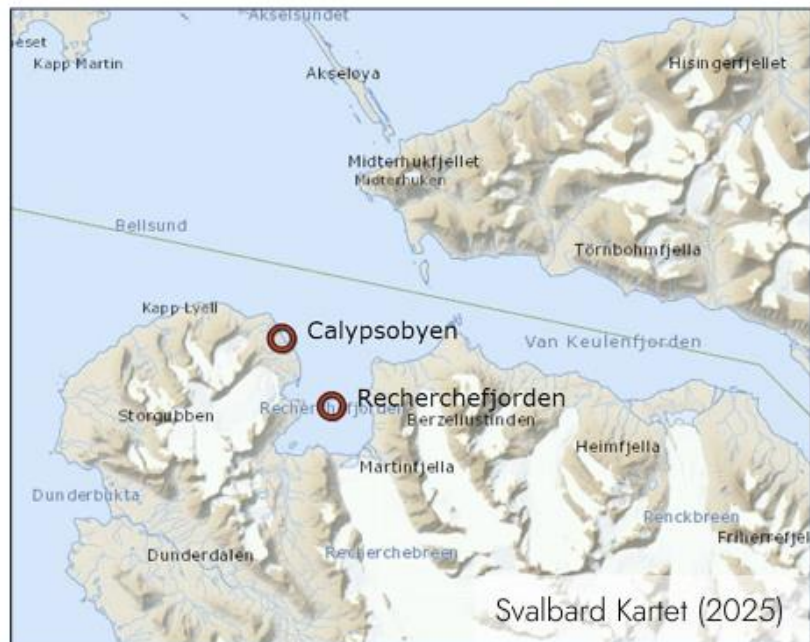
107 Arkfjellet Formation (age uncertain): carbonate rocks, sandstone and shale

Hornsund - Sørkapp:**Sørkapp Land Group (Ordovician):**

110 Wiederfjellet Formation: quartzite

111 Dolomite and limestone formations, undifferentiated

10.06.2025: Recherchefjorden, Bellsund. 77.51965°N, 14.64772°E



Outer Isfjorden to Hornsund (Bellsund Group):

- 149 Phyllite, with quartzite north of Bellsund
- 150 Diamictite

Bellsund to Hornsund:

Sofiebogen Group:

- 135 Gåshamna Formation: calcareous green phyllite
- 136 Gåshamna Formation: phyllite with quartzite layers

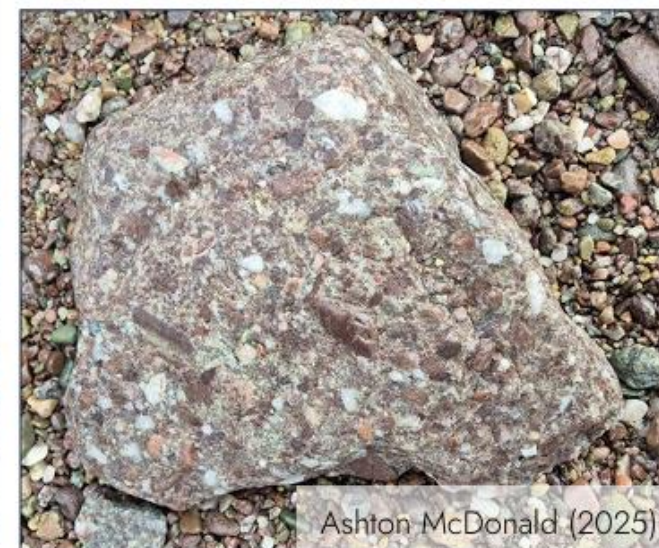
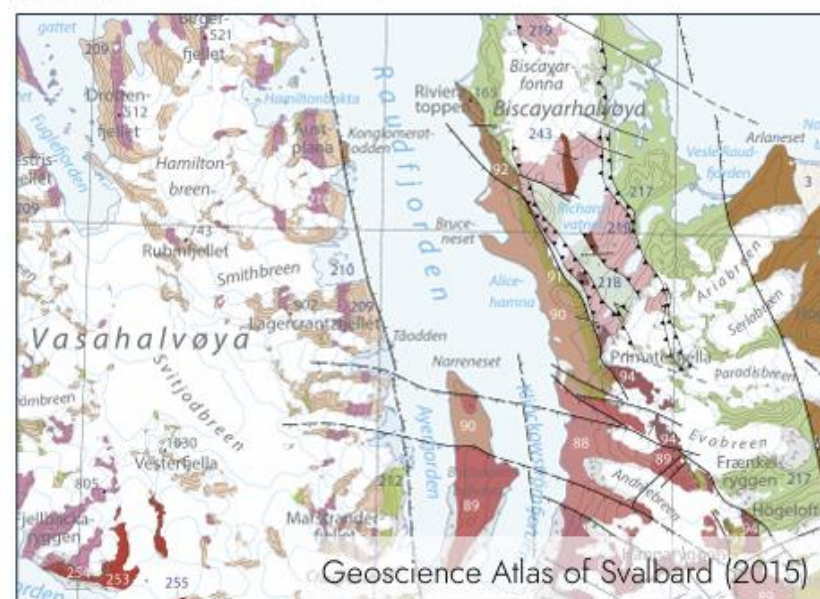
Western Spitsbergen:

- 41 Bravaisberget Formation (Anisian - Ladinian): dark shale, siltstone, sandstone
- 42 Tvillingodden Formation (Olenekian): sandstone, siltstone and shale
- 43 Vardebukta Formation (Induan): sandstone, siltstone and shale

11.06.2025: Gravneset, Hoelhalvøya. (79.56063°N, 11.02052°E)

**Smeerenburgfjorden Complex:**

208	Late-tectonic granite
209	Migmatite
210	Migmatite with aprites
211	Granitic orthogneiss
212	Banded gneiss



Red Bay Group (Lochkovian):	
85	<i>Ben Nevis Formation</i> : greenish and grey sandstone, siltstone and shale
86	<i>Drakehaugen Member</i> : greenish-grey sandstone
87	<i>Schivefjellet Member</i> : quartz conglomerate
88	<i>Frænkelryggen Formation</i> : red clastic rocks, mostly sandstone and siltstone
89	<i>Andréebreen Formation</i> : greenish sandstone and pebble conglomerate
90	<i>Prinsesse Alicefjellet Formation</i> : quartz conglomerate
91	<i>Rabotdalen Formation</i> : sandstone, siltstone, subordinate carbonate rocks
92	<i>Wulffberget Formation</i> : limestone conglomerate, quartz and polymict conglomerate

Event in progress





2025-06-08 Fram Svalbard in spring

Jun 8, 2025 - Jun 15, 2025

About

Members 5

Shared observations from guests and Expedition Team onboard HX MS Fram during our voyage.

Read More >

Your Membership

Edit Project

Project Journal

Overview

52 OBSERVATIONS

30 SPECIES

19 IDENTIFIERS


3 OBSERVERS

Stats

Recent Observations

View All

RG




Sperm Whale

Physeter macrocephalus

4 a day ago

RG




Sanderling

Calidris alba

2 3 days ago


RG



Polar Bear

Ursus maritimus

3 4 days ago



Common Seal

Phoca vitulina

1 3 days ago

iNaturalist

Thanks to your efforts, we collected an astonishing 145 observations for iNaturalist.

[View our iNaturalist project and to submit your own observations please click here.](#)



Mammals sightings

Species name	Days sighted
Common Minke whale	1
Sperm whale	1
Walrus	2
Bearded seal	2
Harbour (Common) seal	1
Polar bear	1
Reindeer	1



Credit: Lilia Gonzalez / HX

Highlights of the trip — polar bear and walrus



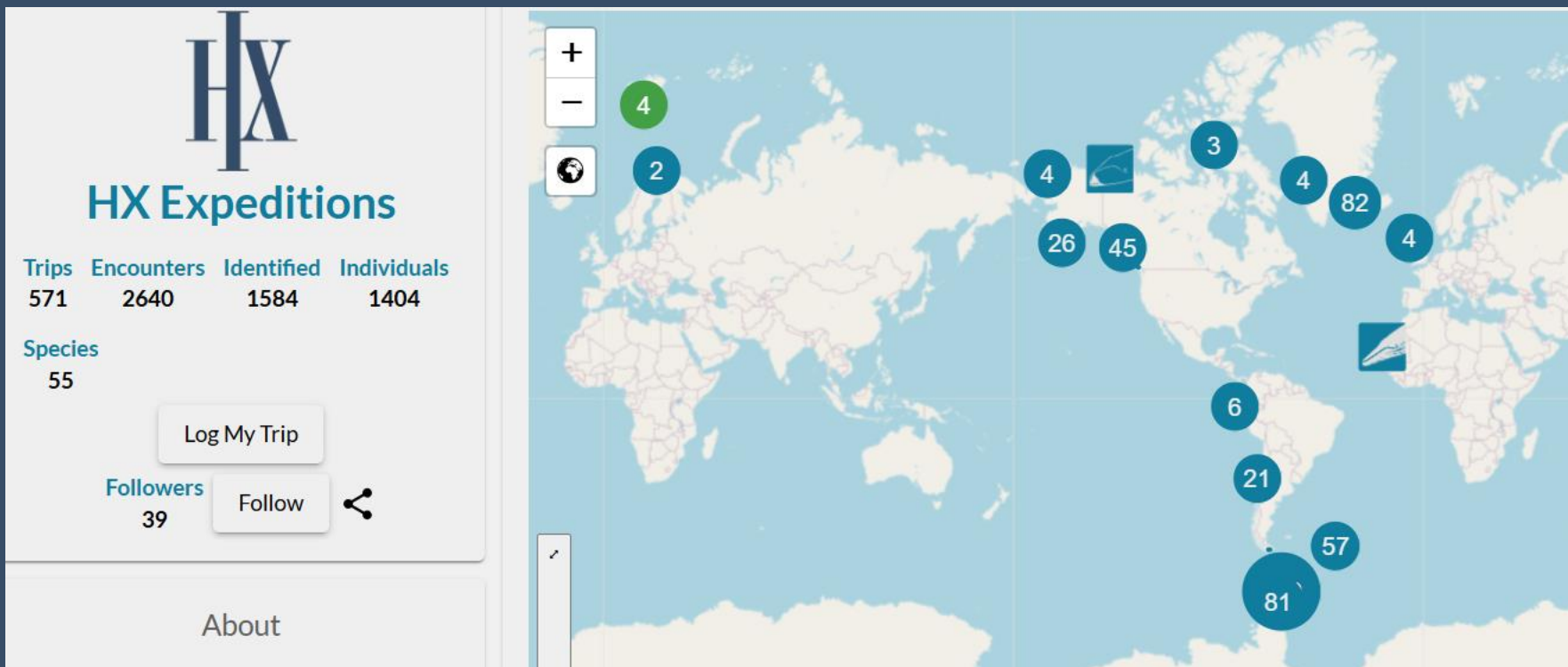
Credit: Lilia Gonzalez / HX

Highlights of the trip — sperm whale



Credit: Lilia Gonzalez / HX

Happywhale



This voyage was a success in terms of different marine mammals species sighted. As such, we were able to submit photos of: sperm whale, walrus, harbour and bearded seals and a polar bear.

Please continue to upload any individually identifiable pictures of whales, dolphins, or seals, you may have to happywhale.com when home, especially old photos from past encounters (the older the better!). Finally, a big thank you to all of you that provided your pictures and videos for submission on board.

[View our submissions](#) to Happywhale

Wildlife List - Marine & Land Mammals



Marine Mammals - Wildlife List - MS FRAM 08/06 to 15/06 2025

[illegible]

Land Mammals - Wildlife List - MS FRAM 08/06 to 15/06 2025

[illegible]

Wildlife List — Birds



Bird Highlights of the trip

An Ivory gull seen while zodiac cruising



Credit: William / HX Guest

A migrating Northern wheatear taking a rest on the ice



Credit: Clement Coudeyre / HX

eBird Trip Report

MS Fram: Spitsbergen West Coast

8 – 15 Jun 2025 (8 days) Public

 Svalbard

 George Swan

 Share

 Edit ▾

Seven days exploring the west coast of
Svalbard

Map

Satellite



Keyboard shortcuts | Map data ©2025 Imagery ©2025 NAS

 31

Species Observed

 8

Checklists

 2

Species with Photos

31 species seen over 8 checklists. See trip report link for details - <https://ebird.org/tripreport/382840>

Birds - Wildlife List - MS FRAM 08/06 to 15/06 2025

Scientific Name	English	Deutsch	Francais	Norsk	08/06	09/06	10/06	11/06	12/06	13/06	14/06
<i>Stercorarius parasiticus</i>	Arctic Skua/ Parasitic Jaeger	Schmarotzerraubmöwe	Labbe parasite	Tyvjo	X	X	X	X			X
<i>Sterna paradisaea</i>	Arctic Tern	Küstenseeschwalbe	Sterne arctique	Rødnebbterne	X	X	X	X	X		X
<i>Fratercula arctica</i>	Atlantic Puffin	Papageitaucher	Macareux moine	Lunde		X	X		X		
<i>Cephus grylle</i>	Black Guillemot	Gryllteiste	Guillemot à miroir	Teist	X	X	X	X	X	X	X
<i>Rissa tridactyla</i>	Black-legged Kittiwake	Dreizehenmöwe	Mouette tridactyle	Krykkje	X	X	X	X	X	X	X
<i>Branta bernicla</i>	Brant Goose	Ringelgans	Bernache cravant	Ringgås			X		X		
<i>Uria lomvia</i>	Brünnich's Guillemot	Dickschnabellumme	Guillemot de Brünnich	Polarlomvi	X	X	X		X	X	X
<i>Gavia immer</i>	Common Diver/Loon	Eistaucher	Plongeon huard	Islom							
<i>Somateria mollissima</i>	Common Eider	Eiderente	Eider à duvet	Ærfugl	X	X	X	X	X		X
<i>Tringa totanus</i>	Common Redshank	Rotschenkel	Chevalier gambette	Rødstilk							
<i>Charadrius hiaticula</i>	Common Ringed Plover	Sandregenpfeifer	Pluvier grand-gravelot	Sandlo				X			
<i>Calidris alpina</i>	Dunlin	Alpenstrandläufer	Bécasseau variable	Myrsnipe							X
<i>Haematopus ostralegus</i>	Eurasian Oystercatcher	Austernfischer	Huïtrier pie	Tjeld							
<i>Larus hyperboreus</i>	Glaucous Gull	Eismöwe	Goéland bourgmestre	Polarmåke	X	X	X	X	X		X
<i>Stercorarius skua</i>	Great Skua	Skua	Grand Labbe	Storjo				X			
<i>Phalaropus fulicarius</i>	Grey/Red Phalarope	Thorshühnchen	Phalarope à bec large	Polarsvømmesnipe							X
<i>Anser anser</i>	Greylag Goose	Graugans	Oie cendrée	Grågås							
<i>Pagophila eburnea</i>	Ivory Gull	Elfenbeinmöwe	Mouette blanche	Ismåke						X	
<i>Somateria spectabilis</i>	King Eider	Prachteiderente	Eider à tête grise	Praktaerfugl				X			X
<i>Alle alle</i>	Little Auk/Dovekie	Krabbentaucher	Mergule nain	Alkekonge	X	X	X	X	X	X	X

Birds - Wildlife List - MS FRAM 08/06 to 15/06 2025

[illegible]



IX

Connect with your
inner scientist