

The background features a deep blue gradient with two whales swimming upwards. A large, semi-transparent 'IHW' logo is overlaid on the left side. The text 'Science & Education Report' is centered in white, with 'MS FRAM' below it.

Science & Education Report

MS FRAM

MS FRAM 9th – 28th September 2024

North West Passage – In the
Wake of the Great Explorers



Picture by Vivi Bolin

History, culture and crafts

Together with the cultural ambassadors and onboard historians you explored Inuit culture and the history of the North West Passage. We were also treated to fantastic cultural performances in many of the places we visited, including Nuuk, Pond Inlet, and Gjøa Haven. Many of you also tried your hands at Arctic inspired arts and crafts.





Science Boat

On our voyage we conducted 4 Science Boats during which we collected Secchi disc measurements, plankton samples, and CTD (Conductivity, Temperature and Depth) readings. We were also very lucky to capture a hydrophone recording of a pod of approximately 100 belugas during our Science Boat in Dundas Harbour.

[Click here to listen to the sound recording of the Beluga whales in Dundas Harbour.](#)

[Click here to visit the Secchi Disc Project.](#)

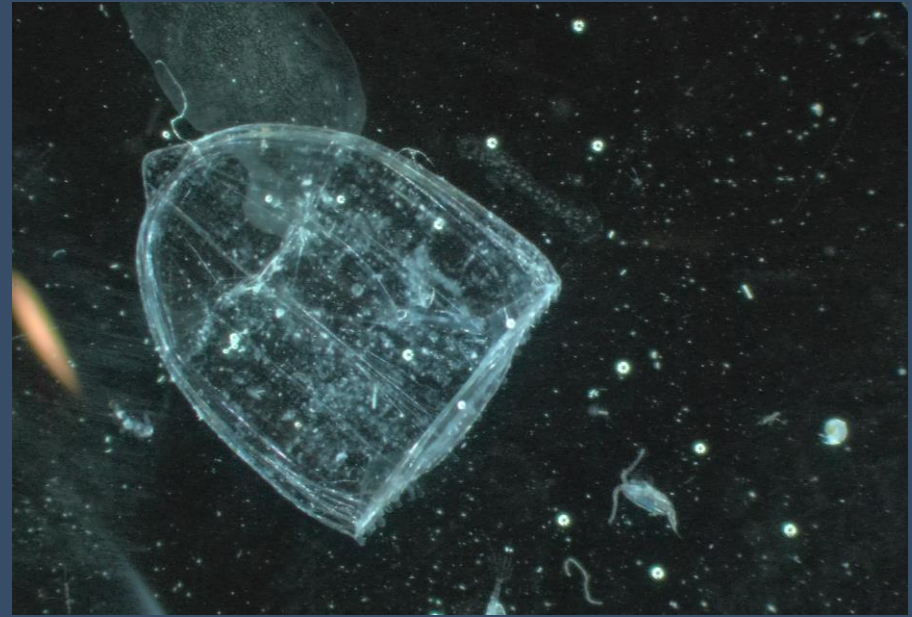


Plankton samples

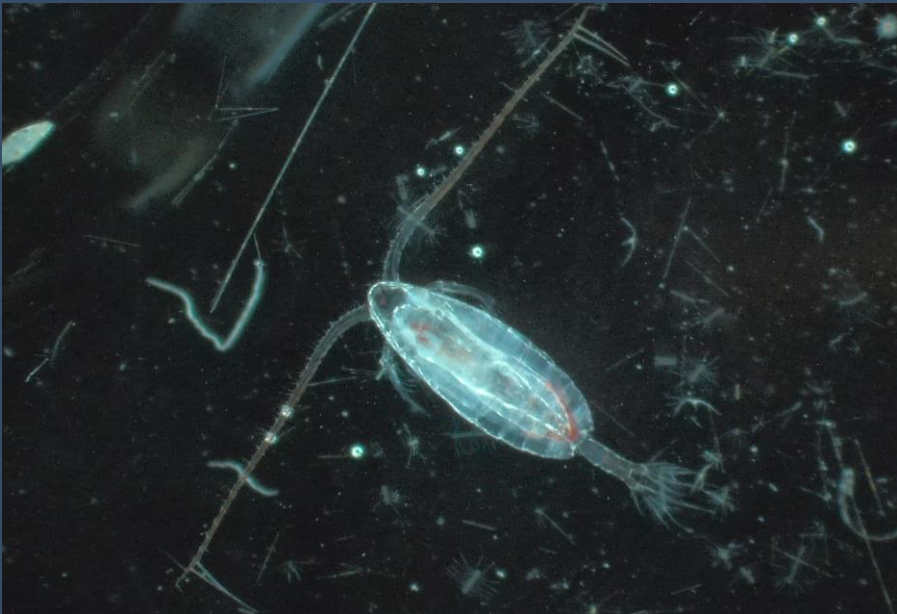
As part of the Science Boats we collected plankton samples which contained a wide variety of zooplankton and phytoplankton, like this beautiful sea butterfly *Limacina helicina*.



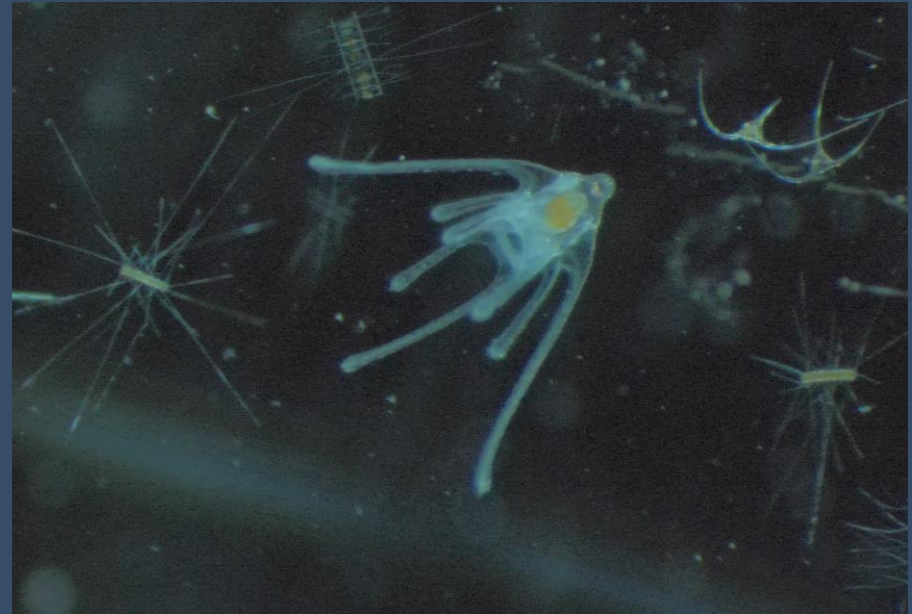
A Sea Angel (*Clione limacina*).



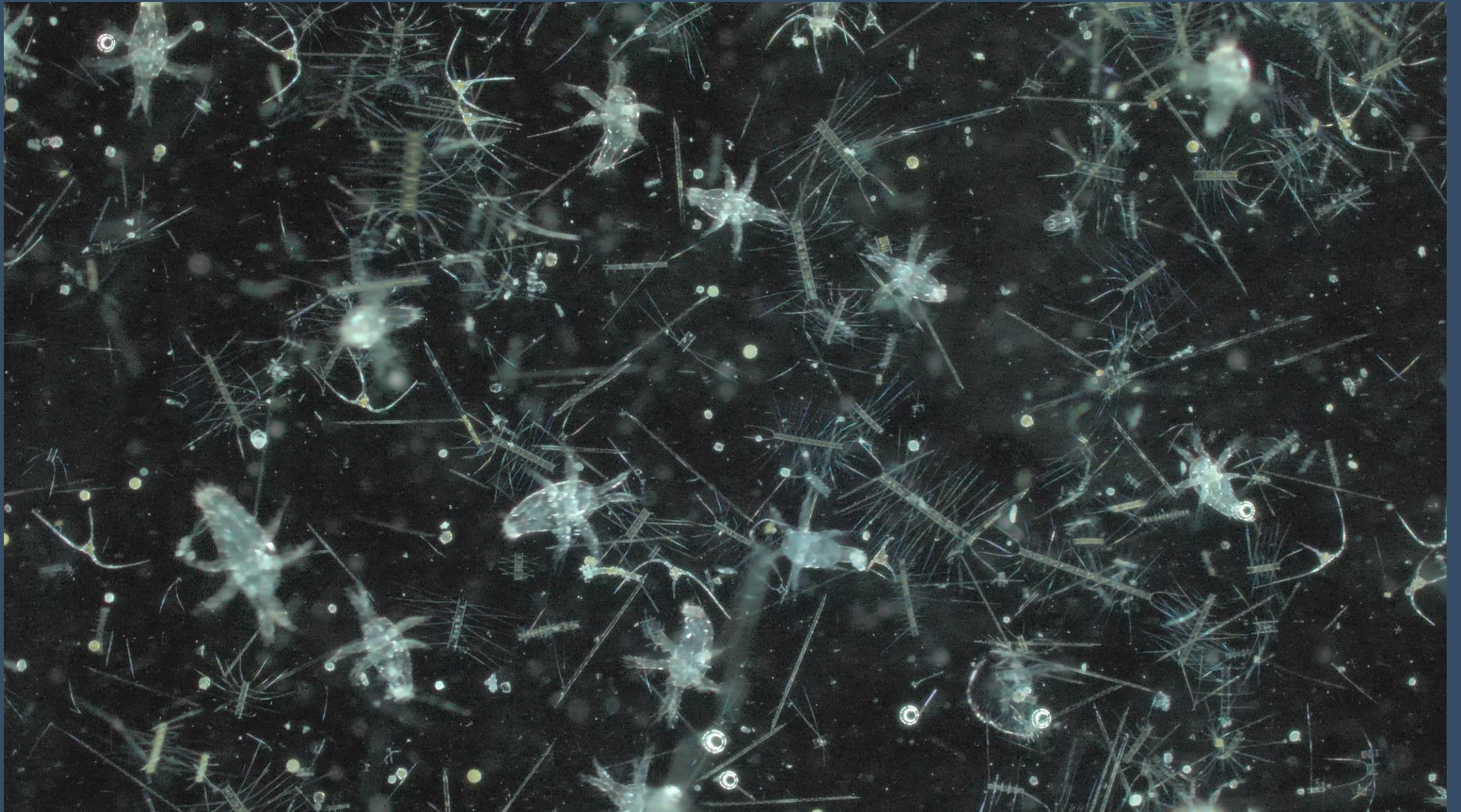
Hydrozoan (a relative to jellyfish).



Copepod (a type of crustacean)



Diatoms, dinoflagellates, and a sea urchin larva (in the middle).



Plankton soup containing phytoplankton (diatoms and dinoflagellates) and zooplankton (copepod nauplius larvae).



iNaturalist

We submitted a total of 25 observations of 17 different species using the citizen science app iNaturalist. A big thank you to everyone who contributed by submitting their observations!

View our iNaturalist observations by [clicking this link.](#)

Happywhale

Whilst no ID photos of whales were captured during this trip, guests were shown how to upload old photos they may have at home. These are extremely valuable to see whether whales sighted more recently have been alive and photographed in the years/decades prior.

[View our submissions to Happywhale](#)



Picture by Yuri Choufour



E-bird

Together with our onboard ornithologist, you identified and counted 43 different species of birds and submitted 65 checklists to Ebird.

View our Ebird data by [clicking this link.](#)

Guest scientist

We had the privilege of hosting Mark Maddox from Acadia University and Environment and Climate Change Canada (ECCC). Mark has been onboard the MS Fram embarking on our expedition through the Northwest Passage in the Canadian Arctic and between Greenland and Atlantic Canada to conduct At-sea Seabird Surveys. These At-sea Seabird Surveys contribute to the ECCC Eastern Canada Seabirds at Sea program to better determine the distribution and abundance of seabirds at-sea across the Eastern Arctic and Atlantic Canada. Mark has been conducting surveys from the bridge where he has collected nearly 40 hours of seabird survey data which has included various species of seabirds, birds of prey, passerines, and shorebirds.



Picture by Mark Maddox

Wildlife List - Birds



Picture by Yuri Choufour

Wildlife List — Seabirds

SCIENTIFIC NAME	ENGLISH	DEUTSCH	FRANÇAIS
<i>Alca torda</i>	Razorbill	Tordalk	Petit Pingouin
<i>Alle alle</i>	Little Auk/Dovkie	Krabbentaucher	Mergule nain
<i>Cephus grylle</i>	Black Guillemot	Gryllteiste	Guillemot à miroir
<i>Fratercula arctica</i>	Atlantic Puffin	Papageitaucher	Macareux moine
<i>Uria aalge</i>	Common Murre	Trottellumme	Guillemot marmette
<i>Uria lomvia</i>	Brünnich's Guillemot Thick-billed Murre	Dickschnabellumme	Guillemot de Brünnich
<i>Oceanodroma leucorhoa</i>	Leach's Storm Petrel	Wellenläufer	Océanite cul-blanc
<i>Larus argentatus</i>	Herring Gull	Silbermöwe	Goéland argenté
<i>Larus glaucoides</i>	Iceland Gull	Polarmöwe	Goéland arctique
<i>Larus hyperboreus</i>	Glaucous Gull	Eismöwe	Goéland bourgmestre
<i>Larus marinus</i>	Great Black-backed Gull	Mantelmöwe	Goéland marin
<i>Pagophila eburnea</i>	Ivory Gull	Elfenbeinmöwe	Mouette blanche
<i>Rissa tridactyla</i>	Black-legged Kittiwake	Dreizehenmöwe	Mouette tridactyle
<i>Phalacrocorax carbo</i>	Great Cormorant	Kormoran	Grand Cormoran
<i>Ardenna gravis</i>	Great Shearwater	Großer Sturmtaucher	Puffin majeur
<i>Fulmarus glacialis</i>	Northern Fulmar	Eissturmvogel	Fulmar boréal
<i>Stercorarius parasiticus</i>	Arctic Skua/ Parasitic Jaeger	Schmarotzerraubmöwe	Labbe parasite
<i>Stercorarius pomarinus</i>	Pomarine Skua/Jaeger	Spatelraubmöwe	Labbe pomarin
<i>Morus bassanus</i>	Northern Gannet	Basstölpel	Fou de Bassan
<i>Ardenna grisea</i>	Sooty Shearwater	Dunkler sturmtaucher	Puffin fuligineux
<i>Nannopterum auritum</i>	Double/crested Cormorant	Ohrenscharbe	Cormoran à aigrettes

Wildlife List – Water birds

SCIENTIFIC NAME	ENGLISH	DEUTSCH	FRANÇAIS
<i>Anas acuta</i>	Northern Pintail	Spießente	Canard pilet
<i>Anas platyrhynchos</i>	Mallard	Stockente	Canard colvert
<i>Anser caerulescens</i>	Snow Goose	Schneegans	Oie des neiges
<i>Branta canadensis</i>	Canada Goose	Kanadagans	Bernache du Canada
<i>Clangula hyemalis</i>	Long-tailed Duck	Eisente	Harelde kakawi
<i>Mergus serrator</i>	Red-breasted Merganser	Mittelsäger	Harle huppé
<i>Somateria mollissima</i>	Common Eider	Eiderente	Eider à duvet
<i>Somateria spectabilis</i>	King Eider	Prachteiderente	Eider à tête grise
<i>Gavia stellata</i>	Red-throated Diver/Loon	Sterntaucher	Plongeon catmarin
<i>Gavia pacifica</i>	Pacific Loon	Pazifiktaucher	Plongeon du Pacifique
<i>Anas rubripes</i>	American Blackduck	Dunkelente	Canard noir
<i>Pandion haliaetus</i>	Osprey	Fischadler	Balbusard pêcheur

Wildlife List – Land birds

SCIENTIFIC NAME	ENGLISH	DEUTSCH	FRANÇAIS
<i>Calcarius lapponicus</i>	Lapland Bunting/Longspur	Spornammer	Plectrophane lapon
<i>Plectrophenax nivalis</i>	Snow Bunting	Schneeammer	Plectrophane des neiges
<i>Columba livia</i>	Rock Dove	Felsentaube	Pigeon biset
<i>Corvus corax</i>	Northern Raven	Kolkrabe	Grand Corbeau
<i>Falco columbarius</i>	Merlin	Merlin	Faucon émerillon
<i>Falco peregrinus</i>	Peregrine Falcon	Wanderfalke	Faucon pèlerin
<i>Falco rusticolus</i>	Gyrfalcon	Gerfalke	Faucon gerfaut
<i>Acanthis flammea</i>	Common Redpoll	Birkenzeisig	Sizerin flammé
<i>Oenanthe oenanthe</i>	Northern Wheatear	Steinschmätzer	Traquet motteux
<i>Eremophila alpestris</i>	Horned Lark	Ohrenlerche	Alouette hausse-col
<i>Buteo lagopus</i>	Rough/legged Hawk	Raufußbussard	Buse pattue
<i>Poecile hudsonicus</i>	Boreal Chickadee	Hudsonmeise	Mésange à tête brune
<i>Poecile atricapillus</i>	Black-capped Chickadee	Schwarzkopfmeise	Mésange à tête noire
<i>Junco hyemalis</i>	Dark-eyed Junco	Winterammer	Junco ardoisé
<i>Turdus migratorius</i>	American Robin	Wanderdrossel	Merle d'Amérique

Wildlife List - Mammals



Wildlife List – Mammals



SCIENTIFIC NAME	ENGLISH	DEUTSCH	FRANÇAIS
<i>Balaenoptera acutorostrata</i>	Common minke whale	Zwergwal	Rorqual à museau pointu
<i>Balaenoptera physalus</i>	Fin whale	Finnwal	Rorqual commun
<i>Megaptera novaeangliae</i>	Humpback whale	Buckelwal	Baleine à bosse
<i>Delphinapterus leucas</i>	Beluga, white whale	Beluga, Weißwal	Bélouga
<i>Lagenorhynchus albirostris</i>	White-beaked dolphin	Weißschnauzendelfin	Lagénorhynque à bec blanc
<i>Odobenus rosmarus</i>	Walrus	Walross	Morse
<i>Phoca vitulina</i>	Harbour seal, common seal	Seehund	Phoque veau-marin
<i>Erignathus barbatus</i>	Bearded seal	Bartrobbe	Phoque barbu
<i>Pagophilus groenlandicus</i>	Harp/Greenland seal	Sattelrobbe	Phoque du Groenland
<i>Pusa hispida</i>	Ringed seal	Ringelrobbe	Phoque annelé
<i>Ursus maritimus</i>	Polar bear	Eisbär	Ours blanc
<i>Alopex lagopus</i>	Arctic fox	Polarfuchs	Renard arctique
<i>Lepus arcticus</i>	Arctic Hare	Polarhase	Lièvre arctique
<i>Lemmus sibiricus</i>	Siberian Brown Lemming	Sibirische Lemming	Lemming des toundras
Delphinus Delphis	Common dolphin	Gemeiner Delfin	Le dauphin commun à bec court



HX

**Connect with your
inner scientist**