

A photograph of a polar bear and its cub walking across a fragmented ice floe in the Arctic. The ice is broken into many small, irregular pieces, and the water is a deep blue. The sky is bright and overcast. The text 'IAR' is overlaid on the left side of the image, and 'Science & Education Report' is centered in the middle.

# IAR

**Science & Education Report**

**MS Fram**

**15<sup>th</sup>-23<sup>rd</sup>**

**June 2024**

**Circumnavigating Spitsbergen  
In the Realm of the Polar Bear**





# Science & Education Program

# Arts & Crafts

Our historian Sandra guided you during our art corner sessions to easily draw your favourite arctic animal.





# NASA Globe Cloud Observer

Together with our Environmental Scientist, Laura, you submitted 2 cloud observations to NASA using the GLOBE observer app.

[View our data](#) on the global map

# iNaturalist

We submitted a total of 24 observations of plants, algae and animals using the citizen science app iNaturalist.

View our data submitted on [our iNaturalist project](#)





# Science Boat

On our voyage, we conducted a total of 4 science boats in Magdalena fjord, Jotunkjeldene, Faksevågen and Alicehamna. We collected water samples to observe under the microscope, and measure secchi depths and several water parameters with the CTD (Conductivity/salinity, Temperature, Depth).

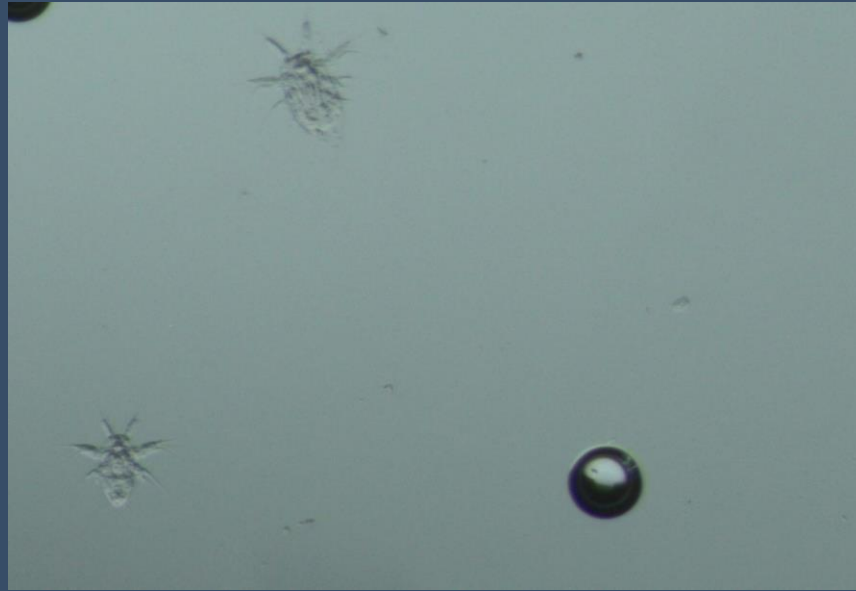
In the sea ice, we also used the hydrophone to listen to the underwater world and recorded amazing singing of bearded seals.

[View our data](#) submitted to the Secchi Disk Project.

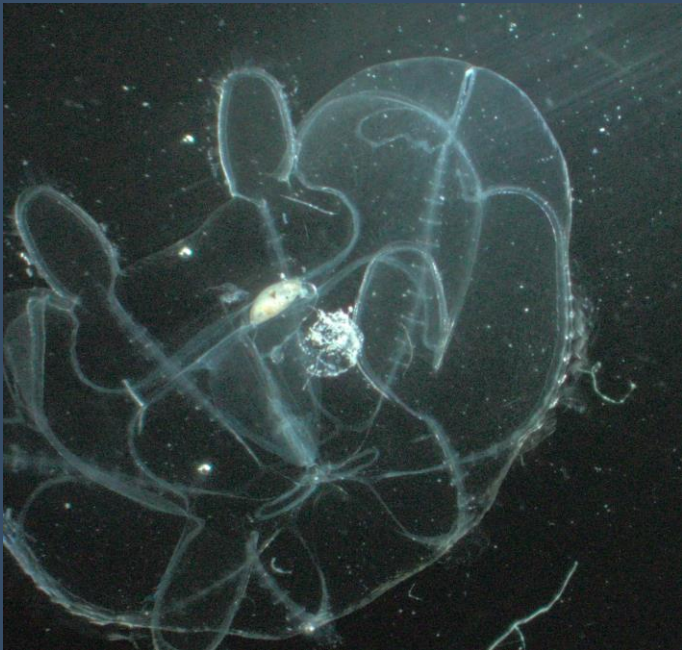
Listen to our soundscapes in [Soundcloud](#).



First stage of sea cucumber.



Larvae of a copepod.



Jelly fish



Copepod.

# Plankton Samples

Our water samples were very rich in copepods, either at larvae or adult stages. We also collected some jellyfish and few Blastula of Arctic sea cucumber.

The chlorophyll a content recorded by the CTD was very low indicating that the phytoplankton bloom is over and was eaten by the copepods.



# Underwater Drone

We deployed our drone in Faksevågen close to the sea ice. We could discover under the ice a dense forest of seaweed.



View the highlights from our underwater drone footage [on YouTube](#)

# Wildlife List - Birds



# Wildlife List – Birds

SCIENTIFIC NAME	ENGLISH	DEUTSCH	FRANÇAIS	NORSK
<i>Alle alle</i>	Little Auk/Dovkie	Krabbentaucher	Mergule nain	Alkekonge
<i>Anser brachyrhynchus</i>	Pink-footed Goose	Kurzschnabelgans	Oie à bec court	Kortnebbgås
<i>Branta leucopsis</i>	Barnacle Goose	Weißwangengans	Bernache nonnette	Hvitkinngås
<i>Calidris maritima</i>	Purple Sandpiper	Meerstrandläufer	Bécasseau violet	Fjæreplytt
<i>Cephus grylle</i>	Black Guillemot	Gryllteiste	Guillemot à miroir	Teist
<i>Charadrius hiaticula</i>	Common Ringed Plover	Sandregenpfeifer	Pluvier grand-gravelot	Sandlo
<i>Clangula hyemalis</i>	Long-tailed duck	Eisente	Harelda boréale	Havelle
<i>Fratercula arctica</i>	Atlantic Puffin	Papageitaucher	Macareux moine	Lunde
<i>Fulmarus glacialis</i>	Northern Fulmar	Eissturmvogel	Fulmar boréal	Havhest
<i>Gavia stellata</i>	Red-throated Diver/Loon	Sternraucher	Plongeon catmarin	Smålom
<i>Lagopus mytus</i>	Rock Ptarmigan	Moorschneehuhn	Lagopède des saules	Fjellryre
<i>Larus hyperboreus</i>	Glaucous Gull	Eismöwe	Goéland bourgmestre	Polarmåke
<i>Plectrophenax nivalis</i>	Snow Bunting	Schneeammer	Plectrophane des neiges	Snøspurv
<i>Pluvialis apricaria</i>	European Golden Plover	Goldregenpfeifer	Pluvier doré	Heilo
<i>Rissa tridactyla</i>	Black-legged Kittiwake	Dreizehenmöwe	Mouette tridactyle	Krykkje

# Wildlife List – Birds

SCIENTIFIC NAME	ENGLISH	DEUTSCH	FRANÇAIS	NORSK
<i>Somateria mollissima</i>	Common Eider	Eiderente	Eider à duvet	Ærfugl
<i>Somateria spectabilis</i>	King Eider	Prachteiderente	Eider à tête grise	Praktærfugl
<i>Stercorarius longicaudus</i>	Long-tailed Skua/Jaeger	Falkenraubmöwe	Labbe à longue queue	Fjelljo
<i>Stercorarius parasiticus</i>	Arctic Skua/ Parasitic Jaeger	Schmarotzerraubmöwe	Labbe parasite	Tyvjo
<i>Stercorarius skua</i>	Great Skua	Skua	Grand Labbe	Storjo
<i>Sterna paradisaea</i>	Arctic Tern	Küstenseeschwalbe	Sterne arctique	Rødnebbterne
<i>Uria aalge</i>	Common Murre	Trottellumme	Guillemot marmette	Lomvi
<i>Uria lomvia</i>	Brünnich's Guillemot Thick-billed Murre	Dickschnabellumme	Guillemot de Brünnich	Polarlomvi



Luis Lalama/HX

## e-Bird

Together with our onboard ornithologist, Enzo, you identified and counted 21 different species of birds and submitted 17 checklists to Ebird.

View our data on our [e-Bird trip report](#)



# Wildlife List - Marine Mammals

# Wildlife List – marine mammals



SCIENTIFIC NAME	ENGLISH	DEUTSCH	FRANÇAIS	NORSK
<i>Balaenoptera acutorostrata</i>	Common minke whale	Zwergwal	Rorqual à museau pointu	Vågehval
<i>Balaena mysticetus</i>	Bowhead whale, Greenland whale	Grönlandwal	Baleine du Groenland	Grønlandshval
<i>Delphinapterus leucas</i>	Beluga, white whale	Beluga, Weißwal	Bélouga	Hvithval
<i>Odobenus rosmarus</i>	Walrus	Walross	Morse	Hvalross
<i>Phoca vitulina</i>	Harbour seal, common seal	Seehund	Phoque veau-marin	Steinkobbe
<i>Erignathus barbatus</i>	Bearded seal	Bartrobbe	Phoque barbu	Storkobbe
<i>Ursus maritimus</i>	Polar bear	Eisbär	Ours blanc	Isbjørn

# Wildlife List - Land Mammals





# Wildlife List – Land mammals



SCIENTIFIC NAME	ENGLISH	DEUTSCH	FRANÇAIS	NORSK
<i>Alopex lagopus</i>	Arctic fox	Polarfuchs	Renard arctique	Polarrev
<i>Rangifer tarandus p.</i>	Svalbard reindeer	Spitzbergen rentier	Renne du Spitzberg	Svalbardrein

# THE X



**Connect with your  
inner scientist**