

The background of the image shows two whales swimming in deep blue water. One whale is in the foreground, larger and more detailed, while another is behind it. The lighting is soft and blue, creating a serene underwater atmosphere. Large, semi-transparent letters 'H' and 'W' are overlaid on the left side of the image.

# Science & Education Report

MS FRAM

**MS FRAM**  
**29<sup>th</sup> May –**  
**7<sup>th</sup> June 2024**

Iceland, Jan Mayen, Spitsbergen –  
Arctic Islands Discovery



Picture by Luis Lalama



# Science & education program

Picture by Vivi Bolin

# History, culture and crafts

Together with our historians and cultural interpreter you explored Icelandic culture and history through lectures, storytelling and guided walks. Many of you also made beautiful animal portraits together with our historian Sandra and tried your hand at leather crafts with our onboard viking Jan.





# NASA cloud observer

Together with our Environmental Scientist, Laura, you submitted 3 cloud observations to NASA using the GLOBE observer app.

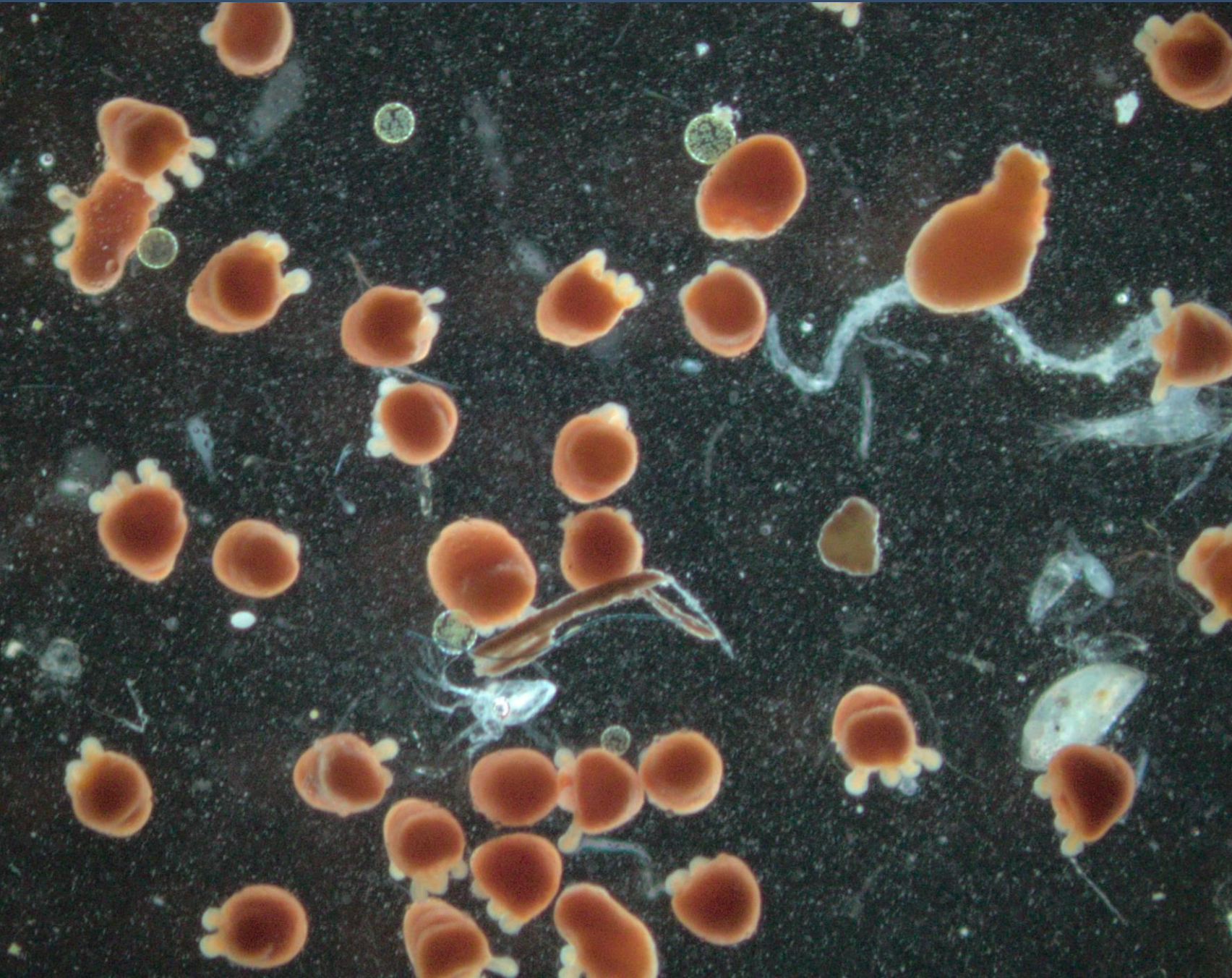
[View our data](#) on the global map



# Science Boat

On our voyage we conducted a Science Boat session in Signehamna in Svalbard, during which we collected plankton samples, Secchi depth measurements and CTD (Conductivity, Temperature and Depth) readings.

[View our data](#) submitted to the Secchi Disk Project.



# Plankton samples

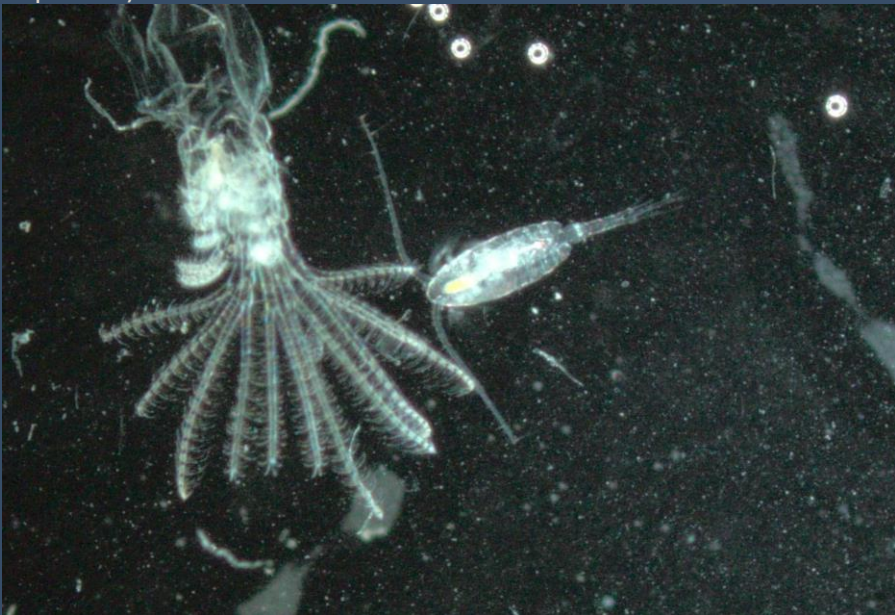
As part of the Science Boat we collected plankton samples which contained a wide variety of zooplankton and phytoplankton. The most abundant zooplankton were copepods and Cnidarian larvae (pictured).



Copepod (a crustacean) together with two diatoms (the green spheres).



Two stages of barnacle larvae – a nauplius (the first stage) and three cypris (the second stage, upper left corner).



Barnacle exuvium (the remains of barnacle cuticles after molting) together with a copepod.



Cnidarian larvae.





Moss campion (*Silene acaulis*),  
Picture by Vivi Bolin

# iNaturalist

We submitted a total of 29 observations of 25 different species using the citizen science app iNaturalist, including 10 different species of birds and 14 different species of plants.

View our iNaturalist observations by [clicking this link.](#)

# Underwater drone

We used our Blueye Drone to explore the underwater world of Stykkisholmur in Iceland. [Follow this link](#) to view the recording.



View the highlights from our underwater drone footage [on YouTube](#).



Golden plover,  
picture by Vivi Bolin

# E-bird

Together with our onboard ornithologist, Enzo, you identified and counted 40 different species of birds and submitted 18 checklists to Ebird.

View our Ebird data by [clicking this link.](#)

# Wildlife List - Birds



# Wildlife List – Seabirds

SCIENTIFIC NAME	ENGLISH	DEUTSCH	FRANÇAIS
<i>Alca torda</i>	Razorbill	Tordalk	Petit Pingouin
<i>Alle alle</i>	Little Auk/Dovkie	Krabbentaucher	Mergule nain
<i>Cephus grylle</i>	Black Guillemot	Gryllteiste	Guillemot à miroir
<i>Fratercula arctica</i>	Atlantic Puffin	Papageitaucher	Macareux moine
<i>Uria aalge</i>	Common Murre	Trottellumme	Guillemot marmette
<i>Uria lomvia</i>	Brünnich's Guillemot Thick-billed Murre	Dickschnabellumme	Guillemot de Brünnich
<i>Chroicocephalus ridibundus</i>	Black-headed Gull	Lachmöwe	Mouette rieuse
<i>Larus argentatus</i>	Herring Gull	Silbermöwe	Goéland argenté
<i>Larus fuscus</i>	Lesser Black-backed Gull	Heringsmöwe	Goéland brun
<i>Larus glaucoides</i>	Iceland Gull	Polarmöwe	Goéland arctique
<i>Larus marinus</i>	Great Black-backed Gull	Mantelmöwe	Goéland marin
<i>Rissa tridactyla</i>	Black-legged Kittiwake	Dreizehenmöwe	Mouette tridactyle
<i>Sterna paradisaea</i>	Arctic Tern	Küstenseeschwalbe	Sterne arctique
<i>Phalacrocorax aristotelis</i>	European Shag	Krähenscharbe	Cormoran huppé

# Wildlife List – Seabirds

SCIENTIFIC NAME	ENGLISH	DEUTSCH	FRANÇAIS
<i>Phalacrocorax carbo</i>	Great Cormorant	Kormoran	Grand Cormoran
<i>Fulmarus glacialis</i>	Northern Fulmar	Eissturmvogel	Fulmar boréal
<i>Puffinus puffinus</i>	Manx Shearwater	Atlantiksturmtaucher	Puffin des Anglais
<i>Stercorarius parasiticus</i>	Arctic Skua/ Parasitic Jaeger	Schmarotzerraubmöwe	Labbe parasite
<i>Stercorarius skua</i>	Great Skua	Skua	Grand Labbe
<i>Morus bassanus</i>	Northern Gannet	Basstölpel	Fou de Bassan

# Wildlife List – Water birds

SCIENTIFIC NAME	ENGLISH	DEUTSCH	FRANÇAIS
<i>Anas crecca</i>	Eurasian Teal	Krickente	Sarcelle d'hiver
<i>Anas platyrhynchos</i>	Mallard	Stockente	Canard colvert
<i>Anser anser</i>	Greylag Goose	Graugans	Oie cendrée
<i>Anser brachyrhynchus</i>	Pink-footed Goose	Kurzschnabelgans	Oie à bec court
<i>Branta leucopsis</i>	Barnacle Goose	Weißwangengans	Bernache nonnette
<i>Bucephala islandica</i>	Barrow's Goldeneye	Spatelente	Garrot d'Islande
<i>Clangula hyemalis</i>	Long-tailed Duck	Eisente	Harelde kakawi
<i>Cygnus cygnus</i>	Whooper Swan	Singschwan	Cygne chanteur
<i>Mareca penelope</i>	Eurasian Wigeon	Pfeifente	Canard siffleur
<i>Somateria mollissima</i>	Common Eider	Eiderente	Eider à duvet
<i>Somateria spectabilis</i>	King Eider	Prachteiderente	Eider à tête grise
<i>Charadrius hiaticula</i>	Common Ringed Plover	Sandregenpfeifer	Pluvier grand-gravelot
<i>Pluvialis apricaria</i>	European Golden Plover	Goldregenpfeifer	Pluvier doré
<i>Gavia immer</i>	Common Diver/Loon	Eistaucher	Plongeon huard
<i>Gavia stellata</i>	Red-throated Diver/Loon	Sterntaucher	Plongeon catmarin
<i>Haematopus ostralegus</i>	Eurasian Oystercatcher	Austernfischer	Huîtrier pie
<i>Podiceps auritus</i>	Slavonian/Horned Grebe	Ohrentaucher	Grèbe esclavon

# Wildlife List – Water birds

SCIENTIFIC NAME	ENGLISH	DEUTSCH	FRANÇAIS
<i>Arenaria interpres</i>	Ruddy Turnstone	Steinwälzer	Tournepierre à collier
<i>Calidris alba</i>	Sanderling	Sanderling	Bécasseau sanderling
<i>Calidris alpina</i>	Dunlin	Alpenstrandläufer	Bécasseau variable
<i>Calidris canutus</i>	Red Knot	Knutt	Bécasseau maubèche
<i>Calidris maritima</i>	Purple Sandpiper	Meerstrandläufer	Bécasseau violet
<i>Gallinago gallinago</i>	Common Snipe	Bekassine	Bécassine des marais
<i>Limosa limosa</i>	Black-tailed Godwit	Uferschnepfe	Barge à queue noire
<i>Numenius phaeopus</i>	Whimbrel	Regenbrachvogel	Courlis corlieu
<i>Phalaropus lobatus</i>	Red-necked Phalarope	Odinshühnchen	Phalarope à bec étroit



# Wildlife List – Land birds

SCIENTIFIC NAME	ENGLISH	DEUTSCH	FRANÇAIS
<i>Plectrophenax nivalis</i>	Snow Bunting	Schneeammer	Plectrophane des neiges
<i>Corvus corax</i>	Northern Raven	Kolkrabe	Grand Corbeau
<i>Anthus pratensis</i>	Meadow Pipit	Wiesenpieper	Pipit farlouse
<i>Motacilla alba</i>	White Wagtail	Bachstelze	Bergeronnette grise
<i>Oenanthe oenanthe</i>	Northern Wheatear	Steinschmätzer	Traquet motteux
<i>Lagopus muta</i>	Rock Ptarmigan	Alpenschneehuhn	Lagopède des alpin
<i>Sturnus vulgaris</i>	European Starling	Star	Étourneau sansonnet
<i>Turdus iliacus</i>	Redwing	Rotdrossel	Grive mauvis

# Wildlife List - Mammals



# Wildlife List – Mammals



SCIENTIFIC NAME	ENGLISH	DEUTSCH	FRANÇAIS
<i>Balaenoptera acutorostrata</i>	Common minke whale	Zwergwal	Rorqual à museau pointu
<i>Odobenus rosmarus</i>	Walrus	Walross	Morse
<i>Phoca vitulina</i>	Harbour seal, common seal	Seehund	Phoque veau-marin
	Unidentified whale	Unidentifizierter Wal	
	Unidentified Dolphin		
<i>Balaenoptera acutorostrata</i>	Common minke whale	Zwergwal	Rorqual à museau pointu
<i>Alopex lagopus</i>	Arctic fox	Polarfuchs	Renard arctique
<i>Rangifer tarandus p.</i>	Svalbard reindeer	Spitzbergen rentier	Renne du Spitzberg



**HX**

**Connect with your  
inner scientist**